

RED POLL

BEEF CATTLE



Red Poll Annual 2020

www.redpoll.org.au



Contents

Presidents Report	1
Executive Officer's Report	1
Eating Quality Competition Red Poll Clean Sweep.....	2
ABRI NEWS.....	2
Case Study: Meeting Market Requirements	3
What's on in 2020	4
Parker Performance Award	4
Brigadier Hurst Award.....	4
Northern NSW/Queensland Report.....	5
National Red Poll AGM and Herd Tour 2019	6
National Red Poll Youth Camp	7
What Does Genomics Mean for Beef Producers? A Single-Step BREEDPLAN Case Study	8
Shadow Creek Farms British Columbia - Canada	10
Victoria Report	12
Mr. Bob Dent - Judge of the 2019 Victorian Region On Farm Challenge	13
South Australian Report	16
Huge Interest in Southern Grassfed Carcase Classic.....	16
Red Poll Satisfying a Commercial Market.....	18
New South Wales Report	19
Western Australian Report.....	20
South Australia Junior Heifer Expo.....	21
Excellence in Red Poll Breed Development I Richard Daley	22
Vale John Malone Maleer Red Poll Stud	24
Vale Doug D'Oliver St Cerry Red Poll Stud	24
Vale Harrold Spalding Cathro Red Poll Stud	25
Advertising Index	IBC



National Executive 2020

PRESIDENT (Federal) Gay Ward

Po Box 460, Altona North VIC 3025
M 0417 558 508 **E** honerv@gmail.com

VICE PRESIDENT Kate Goulding (NNSW/QLD)

Po Box 3045, Lismore NSW 2480
P 02 6663 1206 **M** 0428 221 077
E katgo@mullum.com.au

TREASURER Peter Wilson (SA)

Po Box 251, Minlaton SA 5575
P 08 8853 4104 **M** 0408 534 071
E pcklwilson@hotmail.com

Tim Light (Federal)

"LAGOONA" Armidale NSW 2350
M 0458 744 552 **E** double_fitting@yahoo.com.au

Murray Williams (WA)

Po Box 100, Quairading WA 6383
P 08 9645 5220 **E** yongerellen@activ8.net

Ross Draper (VIC)

75 Running Creek Road, Arthurs Creek VIC 3099
P 03 9714 8314 **M** 0428 510 252
E redcactus@bigpond.com

Alan Couch (NSW)

23 Adamson Crescent, Wanniasa ACT 2903
P 02 6231 5440 **M** 0400 187 260
E alan@couch.net.au

ABRI CONTACTS

EXECUTIVE OFFICER AND BREEDPLAN PROCESSING OFFICER Keryn Hutton

ABRI University of New England, Armidale NSW 2350
P 02 6773 3059 **F** 02 6772 5376
E red.poll@abri.une.edu.au

REGISTRAR Sharon Reynolds

P 02 6773 2327 **F** 02 6772 5376
E sharon.reynolds@abri.une.edu.au

TECHNICAL OFFICER Catriona Millen

P 02 6773 3357 **E** catriona@sbts.une.edu.au

Red Poll Beef Annual - Official publication of: The Australian Red Poll Cattle Breeders Inc.
c/- Australian Business Research Institute (ABRI), University of New England, Armidale, NSW, 2351
Front cover image: Lillieah Newberry at the 2019 National Red Poll Youth Camp.

Published and compiled by: ABRI and G Ward Graphic Design: emajine designz Printery: immij

DISCLAIMER: The contents of the 2020 Red Poll Annual are copyright and reproduction without permission of the publisher is forbidden. The views expressed by contributors and claims made by the advertisers are not necessarily endorsed by the editors and the Australian Red Poll Cattle Breeders Inc. Neither the editors nor the Australian Red Poll Cattle Breeders Inc. take any responsibility for the accuracy of the information contained within this magazine nor for the outcome of any action taken by readers or others based on the information contained therein.

Presidents Report



Hello Everyone, I certainly hope all our Members, families and friends remain safe through the horrendous conditions we are experiencing with raging fires and ongoing drought. Thoughts are with those directly affected and it's usually during times like

these we see the Aussie spirit come to the fore with an amazing resilience to keep going, keep smiling and where farming and regional communities band together with their wonderful community bond and support networks.

2019 has seen our Red Poll breed continue to highlight that they are more than competitive, and suitable to be a vital part of the beef industry. The meat quality has shone through as it has multiple times in the past. You will see these results in some interesting articles throughout the Annual.

The Executive are working through the timeline and tasks of our Strategic Plan implementation.

We always welcome feedback and input. Members who have suggestions or questions please reach out to your Region representative who will be able to assist with your enquiry and take on board your suggestions.

The 2019 National Red Poll Youth Camp held in Glen Innes was again a resounding success and a credit to all those in the Region who support and run the event. Paris Whibley

was awarded Champion Parader and the ARPCBInc Junior Member Award. All participants certainly have a great time and along with cattle handling many facets of cattle management are also covered as well as some fun games of an evening. We were also privileged to be able to attend the inaugural Red Poll's Got Talent on the Saturday evening where we saw some very talented young performers!

At Stud Beef Victoria's Cattle handlers camp there were many breeds represented along with 7 Red Poll's, led by first time to experienced leaders who all placed in the Handlers classes. Megan Tung, who was leading a Red Poll heifer, was awarded Supreme Champion overall Handler. We have a lot of talented young cattle enthusiasts amongst us which is terrific to see.

Beef forecasts are indicating improving prices over the next three years which will be more widespread once drought conditions end. Continuing to invest and retain high quality genetics will help to improve returns in the long term.

Thank you to all our Breeders for their continued support of Red Polls across many spectrums and this is particularly significant given the conditions throughout Eastern Australia which have been very challenging for some time now.

Many thanks to ABRI for their services and continued support. Best wishes to all for a very improved and much wetter 2020, I look forward to seeing you at various events throughout the year ahead.

Report by Gay Ward

Executive Officer's Report



Another year has passed and one that has been tremendously challenging for those who rely on the land for their livelihood. The beginning of 2020 has also been a catastrophe with the scale and severity of bushfires sweeping much of the

country. A number of you will have been affected by the bushfires and even more by this never ending drought. I would like to acknowledge all Red Poll breeders for their support of the breed, and of each other, in these trying times.

NNSW/QLD region are to be congratulated on holding another very successful Red Poll National Youth camp along with the Herd Tour and AGM for 2019. Despite the drought members hosted over 36 entrants providing animals for handling, training and camp activities, along with hosting members of the executive and visitors for the herd tour. A tremendous effort.

There have been a number of schemes organised to help affected primary producers and I would urge any red poll member affected by either drought or bushfires to seek the help available from the Government or other entities.

> NSW Rural Assistance Authority

www.raa.nsw.gov.au/grants

> Bushfire relief grants and other

www.fundingcentre.com.au

> Agriculture and Animal Services Hotline

1800 814 647 to register for assistance for emergency fodder or water allocation.

> Department of Agriculture

www.agriculture.gov.au/ag-farm-food/drought

I certainly hope 2020 brings in a better season with much needed rain and cooler temperatures. Let's try to remain positive. I am looking forward to the outcomes and successes for the breed as the strategic plan is put into action.

The Year letter for 2020 born calves will be 'R'.

Report by: Keryn Hutton

Eating Quality Competition Red Poll Clean Sweep

Red Poll's took all placings in the 2019 Noorat and District Agricultural and Pastoral Society's Koallah Farm Eating Quality Competition which is held in conjunction with their Annual Show and Carcase Competition.

The inaugural competition started in 2015 and is unique to Show and Carcase competitions in Victoria.

Red Poll Breeder Greg Abbott suggested this competition to the Noorat Show Society to enable beef to be rated from a consumers' perspective. It provides breeders with a great opportunity to have their meat assessed by a panel of judges who conduct an actual taste test rating the beef on Meat Standards Australia criteria that includes flavour, tenderness and juiciness.

This year's competition was won by Redward Red Poll stud, with Greg Abbott of Turanga Red Poll Stud coming 2nd and Ross Draper of Red Cactus Red Polls in 3rd place.

Turanga Red Polls have won and been placed previously and Red Cactus and Redward have placed previously.

Top Photo: Noorat Show Eating Quality, L-R Competition Winners Gay Ward, Greg, Brittany and Kelli Abbott 2019.

Bottom Photo: Noorat Show Eating Quality Competition Winning Steaks 2019.



**2019 - THE WINNING TRIFECTA
OF GREAT TASTING RED POLL BEEF**



ABRI NEWS

On the 19th April 2019 Dr Arthur Rickards passed away aged 77, following a long battle with illness.

Arthur established the Agricultural Business Research Institute in July 1970 with just two staff, armed with a bunch of dreams about how to facilitate the adoption of University of New England technology across rural industries. The original home of ABRI was a modest gardener's cottage on the UNE campus.

Over the next 40 years under his guidance, ABRI developed and/or implemented many of the innovative technologies that have made significant contributions to Australian agriculture, particularly in its livestock industries.

After formal retirement in 2011, he continued on in a part time business management role at ABRI.

In 2017, he took on the role as president of the Australian Registered Cattle Breeders Association, the peak body for breed associations which he founded with his great friend Dick Vincent in about 1975.

He organised the inaugural Young Breed leaders Workshop which was held in Brisbane in late 2017. He was passionate about promoting young people and gender equality in agriculture.

Mr Rickards received an Order of Australia medal in 1996 and an Honorary Doctorate by the University of New England in 2003, in recognition of his achievements and contribution to Australian agriculture.



Case Study: Meeting Market Requirements



Photo: Omega 3 steers.

Most of NSW is in its third year of significant drought.

We've managed to keep a core breeding herd, but have now sold the last of our yearling cattle.

Those cattle needed to be 320 to 480kgs for a local feedlot and we were quoted \$2.75 for heifers and \$2.85 for steers.

When the buyer saw their quality, which he described as 'ideal', with excellent easy fleshing ability ensuring they did well in the feedlot, he increased the price by 0.5c a kg.

They averaged 330kgs and returned \$939 a head.

This is not 'earth shattering', but a couple of salient points.

- > He gave us a price that was 5c above the black Angus price.

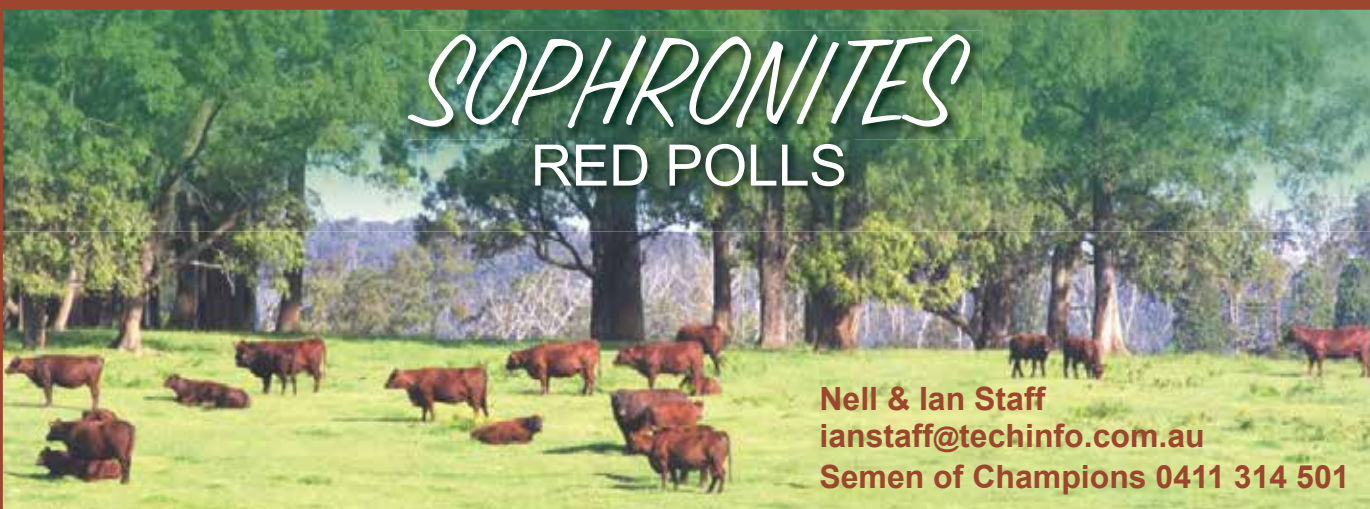
- > Most cattle he was seeing lacked the 'easy doing' ability of our cattle.

- > Secondly and importantly we had met their grid and we'd been able to do it with Red Poll and Red Poll cross Red Angus cattle in severe drought.

It has taken years of breeding with a focused goal to breed cattle with these attributes. In spite of the disastrous conditions they have performed and met the requirements of the commercial market. A feedlot gave us a known price, the saleyard would not.

We will follow the cattle through to processing.

Article by: Prue Lee - Omega 3 Red Polls



**SOPHRONITES
RED POLLS**

**Nell & Ian Staff
ianstaff@techinfo.com.au
Semen of Champions 0411 314 501**

What's on in 2020

January

16-19 Jan Stud Beef VIC Cattle Handlers Camp
29 Jan - 5 Feb Stock and Land Beef Week (VIC, NSW)
29 Jan - 1 Feb SA Beef Week

February

28 Feb - 1 Mar Royal Canberra Show

March

TBA On Farm Challenge VIC
26 - 29 Mar Farm World - Lardner Park, Warragul VIC

April

3-14 Apr Sydney Royal Easter Show

June

4-6 Jun Farmfest Field Days - Toowoomba QLD

July

13-16 Jul Junior Heifer Expo - Adelaide SA

August

7-16 Aug Royal Queensland Show QLD

September

4-13 Sep Royal Adelaide Show SA
19-29 Sep Royal Melbourne Show VIC
26 Sep - 3 Oct Perth Royal Show WA

October

2-4 Oct Red Poll National Youth Camp Glen Innes
TBA Oct/Nov National AGM and Western Australia Tour



PARKER PERFORMANCE AWARD



**CONGRATULATIONS
STORMLEY RED POLL STUD**

BRIGADIER HURST AWARD



**CONGRATULATIONS
LAGOONA RED POLL STUD**

KOALLAH PARK RED POLL STUD

D.R. CASTLE

2205 Princes Hwy, Stoneyford VIC 3260
PHONE 0417 169 914

GLENWYN RED POLL STUD

CARLIE MACKELMANN

208 Jenkins Road, Congupna VIC 3633
Ph: (03) 5829 9855
Email: carlie.mackelmann@gmail.com

LAGOONA RED POLL STUD

Breeding the Champions



Contact: Tim Light
0458 744 552
or 02 6775 1129
Armidale NSW

**LAGOONA
RED POLL STUD**

Northern NSW/Queensland Report

To the NNSW/QLD region: Thank you for your endless support in yet another jam-packed year. This year has seen very tough conditions and as a result, our breeding numbers have decreased. I'm certain however that the quality of cattle remains very high.

A huge thank you must go to my hard working NNSW/QLD region committee including the regional secretary Kim Usher, for all her hard work during the year. It is a team effort and I know every one of us works hard for the region.

I, along with the NNSW/QLD region members, would like to welcome our newest members and stud, the Whibley family from Pallamallawa NSW, who established their new GPS Red Poll Stud in March 2019. I wish them every success with their new stud endeavours.

In 2018-19 we have seen really great showing of quality cattle around the NSW New England show circuit with some exhibitors gaining good results in the interbreed classes. This has been a great outcome for our breed.

As the northern districts work though the big dry there was some great interest and value in our regional trade site at this year's Farm Fest at Toowoomba. The support and efforts of Steve Williams and Albert Hancock is endless for this event. The cattle on display were from the Wilanstie, Kookabookra and Lagoona Studs. There was a successful sale of a bull going into a Droughtmaster crossbreeding operation. This year we focused on the fertility, milk and carcase merit of Red Poll crossbreeding with both Bos indicus and Bos taurus cattle.

Eighteen head of Red Polls were exhibited at the 2019 Brisbane EKKa. The six studs represented were: Lilvale Red Poll Stud from Glen Innes, Omega 3 Red Poll Stud from Quirindi, Red Rush Red Poll Stud from Saumarez Ponds, Kookabookra Red Poll Stud from Glen Innes, GPS Red Poll Stud Pallamallawa and Lagoona Red Poll Stud from Armidale. The Brisbane RNA commended the members for their efforts in ensuring all handlers were wearing the correct breed uniform at the event, which was a great compliment and showing Red Poll

members are proud to exhibit cattle at the Royal level. I had a very proud president moment at the Ekka this year when our competing junior members all had a very successful show. I thought this was a well-deserved outcome as I know how much time and effort went into preparing each of their cattle in these trying conditions. Our overjudge, Mr Steven Reid, sifted through competitive classes to select both the Junior, senior and grand champion females being shown by our junior exhibitors. Sisters Paris and Georgia Whibley of GPS Red Poll Stud received junior and grand champion female, while Lilleah Newberry of Lilvale Red Poll Stud received senior champion female. Just simply outstanding results for our hard-working junior members that are so passionate about their Red Poll cattle. Other places were K & N Usher of Red Rush Red Poll Stud winning senior champion bull. With AJ, RM and DJ Hancock taking home reserve junior champion bull, along with 1st place in the Breeders Group. The Light family of Lagoona Red Poll Stud were successful in taking home the junior and grand champion bull sash.

The focus at the end of the year was on the 12th Annual National Red Poll Youth Camp held in conjunction with the Australian National AGM in Glen Innes from the 11th - 13th of October 2019. Our region worked exceptionally hard to prepare and cater for the visitors. Thank you to all who attended.

I feel the youth development in our Red Poll breed is a real talking point and our region is taking the lead in this regard. I commend the members who support the camp by donating cattle, trucks, prizes and time to the National Youth Camp held in NSW.

I look forward to working with the new committee and the youth camp committee in promoting the strength and commitment of our region for a very successful and enjoyable year ahead.

Report by: Tim Light - NNSW/QLD President



Home of the Red Poll
Red Polls grown at the top of the range
Enquiries Welcome

Contact: Albert or Rachael Hancock
"Yarraldool" Pinkett Road, Glen Innes NSW 2370
Phone: 02 6733 4666



PRISCILLA HANCOCK "WELLROCK"
110 BLACKS ROAD GLEN INNES N.S.W
PH. 02 6732 5038

National Red Poll AGM and Herd Tour 2019

Hosted by NNSW/QLD region the tour began Friday 11 October in the Northern Rivers district where three studs opened the gates for viewing - "Inglewood", David Dillon, "Minyon" Kate Goulding and Dean Jensen followed by lunch at "Tranquility", Boyd and Leone Beckham.

The next day the tour then made its way up over the mountain ranges to "Kookabookra", Albert and Rachel Hancock. The tour headed to the Glen Innes Showgrounds for lunch courtesy of NNSW/QLD region where the 2019 national youth camp was under way.

National executive members Alan and Cheryl Couch, Gay Ward, Ross Draper and Peter Wilson were able to view cattle from New England studs which were on display - "Lilvale", Lilleah Newberry, "GPS", Whibley family and "Lagoon", Light family.

Following lunch the tour paired up with the youth camp tour to visit Rangers Valley Feed Lot for an informative tour with a rangers valley representative describing the processes of a major feedlot operation.

Returning back to the Showground the executive got the opportunity to witness the famous heifer fitting challenge which the judge Peter Wilson cast his eye over to select the winners.

The AGM meeting was well attended at Tatts hotel followed by an extraordinary dinner and night of entertainment featuring the "Red Polls got Talent Quest" with judges Alan Couch and Gay Ward having their work cut out choosing the "best of the bunch".

Sunday was show day at the National youth camp where the executive got firsthand experience of our youth camp show. I commend Ross Draper on his first-rate judging of the paraders competition.

A number of executive members entered the very prestigious open senior aged paraders competition. This event was judged by the winning parading



students and found Peter Wilson taking a 1st place back to SA., Ross Draper winning a 3rd for VIC and Alan Couch taking a Highly Commended to Southern NSW.

It was a very enjoyable weekend and combining the National youth camp with the National AGM proved to be a great success.

Report by: Tim Light - NNSW/QLD President



Moyle Park Paladin MPS 1370 DOB 2/7/18. 662kgs on 11/11/19

Moyle Park

Performance tested cattle

RICHARD & KAY DALEY

PO Box 169 Jamestown SA 5491

Phone 0438 641 463

Email moylepark@ozemail.com.au

National Red Poll Youth Camp



In 2019 the 11th consecutive National Red Poll Youth Camp was held in Glen Innes northern NSW on 11-13 October 2019.

36 students travelled from Bellingen in the east to Moree in the west and many other areas throughout New England, NSW.

On Friday morning students arrived for their red poll heifer allocation prior to the usual well catered for lunch. The program began with instruction in show preparation, public speaking, rope halter making and parading work. To end the day attendees participated in the ever famous extravaganza event, a great friend building exercise.

Saturday morning the senior age group joined with the national executive members for a bus tour to Yarraldool, the Hancock family farm (Kookabookra Stud). In the meantime the junior and intermediate age groups started their first rotation of clipping, AI and preg testing, cattle selection and more parading education.

Following another tasty lunch the junior and intermediate age group then joined the national executive tour to visit the Rangers Valley Feed Lot north of Glen Innes. The senior age group had a very in depth clipping presentation presented by Murray Weller followed by a hands on and very informative AI and preg test lecture with Jesse Josphe and Justin Mattues.

With the bus tour returning all students jumped into the heifer fitting challenge overseen by judge Peter Wilson. Peter had a tough job as all students were showing off all the skills learnt over the weekend. Congratulations to Amba Gibson, Libby Cook and Analiese Wark on winning the age groups.

An out standing dinner and night of entertainment was held at the Glen Innes RSL Club. The students enthusiastically prepared for the "Red Poll got Talent" show with special guest judges Alan Couch, Gay Ward and Kelso Looker. A very enjoyable and somewhat hilarious evening was had by all.

Sunday show day soon came around with students keen to demonstrate everything they'd learnt and achieved over the weekend. Over judge in the beef cattle young judges competition, Mr Murray Weller, selected the Whibley sisters in each age group for a win.



Mr Ross Draper travelled from Victoria to judge the paraders competition. The students had done an outstanding job with the heifers green and needing a lot of work. All skill to the participants.

Results for 2019 Red Poll National Youth Camp

- > **Junior Judging:** 1st Georgia Whibley
- > **Intermediate Judging:** 1st Sophia Whibley
- > **Senior and Champion Judging:** 1st Paris Whibley
- > **Sub Junior Parader:** 1st William Higgins
- > **Junior Paraders:** 1st Maddison Smith
- > **Intermediate Parader:** 1st Koby Usmar
- > **Senior and Champion Parader:** 1st Paris Whibley
- > **Open Parader Over 25 years:** 1st Peter Wilson
- > **Cleanest Stall Award:** Kacy Blackwell
- > **Encouragement Award:** Brock Wylie
- > **Most Improved Award:** Demi Bowd
- > **Junior Herdsman award:** Amba Gibson
- > **Intermediate Herdsmen Award:** Libby Cook
- > **Senior Herdsmen Award:** Chelsea Nolan
- > **Overall Herdsman Award:** Georgia Whibley
- > **ARPCBI Junior Member Award:** Paris Whibley (*photo above*)

A very big thank you to all attendees and the NNSW/QLD region members and the very hard working youth camp committee and of course the wonderful cattle donors.

See you at the 2020 National Camp 2-4 October Glen Innes NSW.

Report by: Tim Light

What Does Genomics Mean for Beef Producers? A Single-Step BREEDPLAN Case Study

In recent years, there has been much work done to utilise genomic (DNA) information in genetic evaluations for a range of livestock species (including beef, dairy, sheep, pigs and poultry). In Australia, four beef breeds currently utilise genomic information in their Single-Step BREEDPLAN analyses. These are Brahman (implemented April 2017), Hereford (implemented October 2017), Angus (implemented December 2017) and Wagyu (implemented April 2018). Genomics does not replace the need to collect quality performance information (phenotypes); instead, it complements traditional performance recording by bolstering the rate at which genetic improvement can be made within a population. This article will present a case study on the effect of including genomic information in the BREEDPLAN analysis, and outline some of the challenges that breeds will face as they move into the genomic era.

Genomic Implementation Case Study

A case study on the effect that genomics has on EBVs, using the Hereford Single-Step BREEDPLAN analysis, was recently presented at the 2019 Association for the Advancement of Animal Breeding and Genetics (AAABG) conference. The full paper is entitled “Two Years In: Lessons from the Introduction of Hereford Single-Step BREEDPLAN” and can be found on the AAABG conference website here: <http://www.aaabg.org/aaabghome/AAABG23papers/132Millen23536.pdf>.

The Hereford Single-Step BREEDPLAN analysis combines pedigree, performance and genomic information from three breed societies, being Herefords Australia, the New Zealand Hereford Association and the Hereford Cattle Breeders Society of Namibia. The Hereford case study identified three main effects of including genomic information in Single-Step BREEDPLAN analyses. These are:

1. EBV Movement for Individual Animals

While the inclusion of genomic information did not change the breed average EBVs, the EBVs of some individual animals changed considerably. Across traits, EBV movement occurred in both directions, with some EBVs increasing and others decreasing. This EBV movement was more pronounced in genotyped non-parent animals (e.g. young animals) than for sires, although EBV movements were evident for both groups. This likely reflects the EBV accuracy prior to the inclusion of genomic information; young animals, with lower EBV accuracy, showed greater EBV movement.

2. Increased EBV Variance (Spread)

The inclusion of genomic information has led to increased EBV variance (spread) for most traits. This increase in EBV spread is useful for beef producers as it better allows the identification of animals at the extremes. The genetically superior animals can be selected for breeding programs, while the genetically inferior animals can be culled from breeding programs.

3. Increased EBV Accuracy

The inclusion of genomic information has led to an increase in EBV accuracy. This increase is greatest for animals with a low EBV accuracy prior to the inclusion of genomic data; this trend is consistent across traits (Figure 1). However, the magnitude of the increase in EBV accuracy varied across traits (Figure 1). This was largely dependent on the heritability (the percentage of the trait that is explained by genetics) and the size of the reference population (animals with both genotypes and phenotypes) for the individual trait.

As the case study highlights, the inclusion of genomic information into BREEDPLAN in the form of a Single-Step BREEDPLAN analysis has three main effects. All three of these work together to give beef producers more information (in the form of EBVs), which can be utilised to make more informed selection decisions. In turn, this should help to improve the rate of genetic gain within the population. It is important to remember however, that genomics is only giving breeders the opportunity to “boost” the rate of genetic improvement they can make. Genetic improvement, with and without genomics, requires good recording of performance information, and the use of this information to make informed selection decisions. In situations where a breed already has a strong performance recording base, genomics becomes the icing on the cake.

Challenges in the Genomics Era

While genomic information has the potential to add value for those already using genetic evaluations effectively, some challenges still remain. For breeds that have yet to move to Single-Step BREEDPLAN, developing a reference population remains a key challenge; one that is often limited by the number of animals with genotypes. Once a breed has a sufficiently sized reference population to implement Single-Step BREEDPLAN, however, the challenge becomes ensuring that the reference population remains current. This is usually limited by the number of phenotypes being collected, and not the number of genotypes. Indeed, producers are likely to embrace genotyping; in the case of Hereford,

there has been a 3.8 fold increase in the number of animals with genotypes in the 17 months since the introduction of their Single-Step BREEDPLAN analysis.

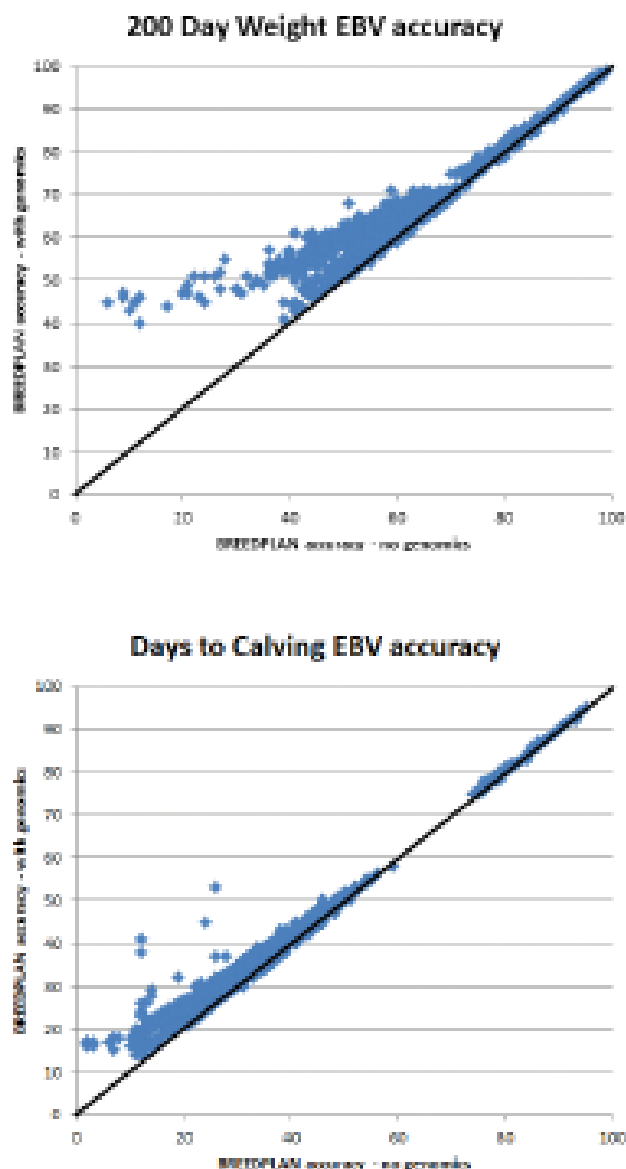
Ensuring that the reference population has a large number of animals with performance information for multiple traits does not just keep the reference population current, but also adds to the power of genomics. As mentioned previously in the article, the lift in EBV accuracy varies by trait. When the reference population contains large numbers of animals that are recorded for a particular trait, the subsequent increase in EBV accuracy is generally larger. Therefore, it is important that beef producers continue to collect performance information for a range of traits, including growth, fertility and carcase. After all, unless the trait is being adequately recorded, genomics is of limited use.

Conclusion

It is now several years since Single-Step BREEDPLAN was introduced for several of the larger breed societies. The inclusion of genomic information in the BREEDPLAN analysis is causing changes in the EBVs of individual animals, increasing the spread of EBVs and also increasing EBV accuracy. All of these factors should help producers to make more informed selection decisions and thus increase the rate of genetic gain within a given population. However, genomic information will only “boost” the progress that a breeder is already making; performance recording and use of this information to make informed selection decisions is still critical for those wishing to make genetic progress. Even with the implementation of Single-Step BREEDPLAN, the collection of good quality phenotypes for a range of traits will remain vital.

Article by: Catriona Millen - Technical Officer, SBTS

Figure 1: Changes in EBV accuracy for 200 Day Weight and Days to Calving when genomic information is included in the Hereford Single-Step BREEDPLAN analysis.



Breeding for Excellence



*Turanga E.D.A Little Man won 2019
On Farm Challenge Junior Champion Male*



*Turanga Tiana won 2019
On Farm Challenge Junior Champion Female*



*Turanga Lawrence won Interbreed Champion Bull
at the 2019 Warrnambool Show. Sire of both 2019
On Farm Challenge Junior Champions*

GREG ABBOTT

287 Kolara Lane, Kolara VIC 3265

phone 03 5592 7224 mob 0438 922 313

email gk.abbott@bigpond.com

RED POLL

BEEF CATTLE

Turanga
RED POLL STUD Est. 1985

Shadow Creek Farms British Columbia - Canada



As I write this article it is mid November and we have had a good fall with the cows grazing second growth hayland, that has gone dormant (because of frost in September) till the end of October. We got our first significant snowfall this last week so everything is covered and the animals are now on full feed (dry hay and silage). We weaned the calves the first part of October and they have been doing well on haylage, gaining 1 1/4 to 1 1/2 pounds a day. This is ideal for us as they will be ready for breeding next June. After culling we are feeding 50 calves, 80 cows and 4 bulls.

With the long feeding season (November to May) we need between 600 and 800 of the big round bales and that is what we try to do during July and August. Mostly put up a legume / grass mix hay and some cereal greenfeed. If it gets to late then we have to wrap silage as the weather gets cooler and the days shorter so the hay/ greenfeed will not dry. Talking about the length of days during the growing season, in June/July when the grass should be growing up to an inch per day, the sun come up at four am and sets at ten pm but it only really gets dark for a couple of hours. But we pay for it in the winter when we get six hours of daylight.

Red Polls in Canada have suffered because of breeders retiring or passing away with no real plan on what happens to their herds. As a result the animals are usually sold at auction and either they go into a commercial operation or for slaughter. As a result we now have fewer herds with one in Nova Scotia, a couple of small ones in Ontario and one in Alberta (just selling calves for the feeder market) and ourselves in British Columbia.

Our long term goal is to get, a dozen or so, other breeders established in western Canada. By establishing a consistent market for bulls this will show others that they also can sell breeding stock into the commercial market. As for our farm we primarily sell bulls to the

commercial cattle breeders (usually 20 plus per year) as well as lot's of heifers when there is a demand. Our farm registers more calves than all the rest of Canada so you can see why we try to get small herds established with our heifer sales.

Cattle ranching is quite different here as we calve in March, hopefully after the real cold weather has passed (minus 30's in February) and still have a bull calf ready for breeding by the next June to August for the commercial market. Cattle are separated into bunches and turned out on new pasture with their bull on June first. Bulls are pulled mid July and calves are weaned in October. We rotational graze and with three different groups it means we are moving cattle almost every day from the start of June till September. We usually start feeding the animals sometime in October till next June.

We have culled extensively for feet, udders, temperament and fertility (45 day breeding season max) and as a result we have a herd that is high in milk production with good to great udders on cows that are eight to eleven years old. I give them a break when they get fifteen plus as they have already proved themselves. We have bulls in our AI tank from Australia (Eurimbla, Oakwood and Yongerellen), United Kingdom and the United States as well as two bulls on the ground from North Carolina and our home grown bulls. We are so very thankful that we have the opportunity to raise Red Poll cattle and we hope that we can see a resurgence of the breed again.

Article by: Dean and Marsha Anderson

.....
Left Photo: 3 February 2019 - Cows sunny themselves at Minus 40°C - Shadow Creek Farms, Canada.

Right Photo: First turn out on new grass - Shadow Creek Farms, Canada.



Stormley Red Polls



Grand Champion
Red Poll Female
Sydney Royal 2019
Stormley Queen Bee
Calf: Stormley Sia

Supreme Red Poll
Melbourne Royal 2019
Stormley Princess

S.Storm & Sons
Phone: 03 54532140
Mobile: 0428 262 991
trentstormley@yahoo.com

All Enquiries Welcome

WOODBURN RED POLLS

Steers gaining weight on dry feed with Molaphos and Vetch hay



D.N. PAYNE - WOODBURN
Kilmore VIC 3764 | Phone 03 5782 1002
Email dnpayne@bigpond.net.au

Victoria Report

I would like to thank Victorian members for all their dedication and efforts towards our great Red Poll breed. The past 12 months within the beef industry have not been easy for anyone, with a long hot dry summer, hay and grain hitting records prices and water irrigation prices at ridiculous values. Our winter came with some much needed rain falling and some parts of Victoria are having a terrific season, other parts not so much.

We once again had a site at the 2019 Larder Park field days in which we had many great visitors and sales over the course of the field days. Thanks going to Frank and Anne Moya, Sue Wainright, Ian and Neil Staff for manning the site and also to Ross Draper and Gay Ward for supplying the cattle and Daryl Johnson for transporting the cattle and gear.

We had three Victoria Region members make the long haul up to the 2019 Sydney Royal Show. The Sydney show is a great place to showcase your cattle to the wider community with 1000s of people coming through the gate every day. This show still seems to have a big commercial relevance, unlike most other royal shows. It is not uncommon to have genuine farmers and buyer's here to look and hopefully purchase your stock. Grand Champion female was won by Stormley Queen-Bee and Grand Champion Male was won by Red Rush The Witcher who was also Supreme Exhibit.

Our 2019 OFC challenge was held in March 2019 with a good amount of entries, but slightly down from last year. Bob Dent was our judge this year and it was a pleasure to have a man of his calibre and knowledge look over our Victoria Red Polls herd. Junior Champion Heifer and Junior Champion Bull were awarded to Greg Abbott of the Turanga Stud. Senior Champion Bull and Grand Champion Bull went to Don Castle of Koallah Park Red Polls. Senior and Grand Champion Female got awarded to Stormley Red Polls. I thank the committee for all the time and travel they have put into this event. It wouldn't be possible without so much great support.

The Victoria region held their AGM in July this year at Whittlesea. The meeting was well attended and all positions were filled. Those elected include President Trent Storm, Vice President Greg Abbott, Treasurer Gay Ward and Secretary Anne Moya. A huge thank you to Ian Staff for his many years' of service as secretary/treasurer of the Vic region - Ian has been doing this job for as long as I can remember. This job requires a huge amount of work and time, so for Ian to give this many years' service to the breed is truly remarkable.

The 2019 Royal Melbourne show saw 17 Red Poll Cattle entered to be judged under James McWilliams. The three Red Poll studs that entered were Red Cactus, Redward and Stormley with Grand Champion Male being Redward Dorado and Grand Champion Female and Supreme Exhibit being Stormley Princess. A massive thank you goes to all the exhibitors and their workers in preparing and showing each animal.

Our members have been actively supporting the Victoria country show in their local areas with great success. The



Photo: Redward Barnaby (DOB 7/9/2016) Supreme Champion Beef Exhibit at 2019 Dandenong Show. Handlers: L-R Cassy Wilsmore and Megan Tung.

Storm family of Barham won Supreme Exhibit of the show at this year's Swan Hill annual event. They also were awarded Reserve Champion Carcass on the Hook with a score of 86.06 for a purebred Red Poll steer. A few weeks later the Storm family tasted more success at Barham Show by winning Interbreed Grand Champion Female.

Gay Ward's stud Redward attended the 2019 Dandenong show where Redward Barnaby was the hero of the stud cattle judging taking the top honour - Supreme Champion Beef Exhibit at a show where all classes are 'interbreed'. This was a fantastic result for Gay Ward, and for the Red Poll breed. Gay received a suite of awards at the show, including the coveted Most Successful Beef Exhibitor sash. Dandenong 2019 was also the inaugural show of the new Gippsland Steer Association competition. The line-up of 12 steers included two Red Polls, one donated by Douglas Payne's Woodburn stud and the other donated by Tiraslea Red Polls. The competition will continue at the upcoming Berwick, Warragul and Bunyip shows, and exhibitors will accumulate points across the four shows.

The Lardner steer trial, which includes Red Poll steers from the Balla Balla stud and Fowler Farm, will conclude in early December. We look forward to the final results and presentation event in February 2020.

The Turanga Red Poll stud showcased their cattle at the 2019 Warrnambool show with outstanding results by being awarded Interbreed Grand Champion Cow and Reserve Interbreed Bull. Well done to all these studs on the great job they do by promoting and showing off our Red Poll cattle to the wider population.

On a sadder note I would like to extend my deepest sympathy on the passing of Doug D'Oliver who we all would have known. Doug had been breeding red polls for a number of years and was an active member in the promotion of the Red Poll breed. We also had a previous life member in Harold Spalding that has sadly passed away. Even after Harold dispersed his cattle he still took a very keen interest in the Red Poll breed and their whereabouts. Charles Lindquist was another Red Poll member that has sadly passed away recently.

I look forward to working with all our members in the coming year to promote and market our Red Poll cattle the best we can.

Report by: Trent Storm

Mr. Bob Dent – Judge of the 2019 Victorian Region On Farm Challenge

The 2019 On Farm Challenge attracted entries from eight herds with 90 animals contesting ten classes. The herds represented ranged from large commercial herds to small stud herds and covered most parts of Victoria. It was certainly an honour to judge the Challenge and it is a unique event allowing cattle to be judged on their property of origin. It also gives the judge a wonderful opportunity to see many of the Victorian agricultural districts, in this year much of it under severe feed pressure.

Each judge of the Challenge is asked to develop their own judging system. In my case, I assessed each animal using the Beef Class Structural Assessment System used for genetic evaluation of structure and for assessing suitability of animals submitted for export as breeding stock. For each herd, I asked the breeders to outline their target market and assessed animals according to the specifications of that market. I assessed structural traits of feet, legs, udders, testicles, maturity type, muscling, capacity and temperament. Scores were allocated based on these observations to decide class placings.

The general standard of the cattle assessed was a pleasant surprise. The care and attention to breeding, management and nutrition of the breeders was obvious, as was their passion for their Red Poll cattle. My lasting impression was just how good the Red Poll females were. They were generally medium to larger frame with great capacity, adequate muscle and quiet temperament. Udders on springing or lactating females were excellent and they were doing a great job on their calves. I believe structure in females is important for longevity and to breed bulls in stud herds. Generally, the females had good feet with some longer, weaker pasterns. While there were not many bulls entered, some of the bulls were really outstanding with strong muscling, large capacity and breeding soundness. The skin and hair types were excellent in most herds with soft easy doing cattle the norm.

There are challenges for smaller breeds like Red Polls. A small gene pool makes finding cattle to make genetic improvement challenging. Commercial herds need to be focused on things that contribute to commercial return. Fertility, temperament, doing ability, adequate milk and longevity are essential for the cows. Sale stock need to be flexible to meet a number of different markets but the herd needs to have a target market as their objective. Except in really challenging environments, heifers should be managed to join as yearlings, calve unassisted as two-year olds and re-join on their second joining. Joining times should be selected to suit seasonal growth and the market targets. They should be short joining periods for heifers and cows.

Many of the herds involved met these requirements with a strong commercial focus. That is to be applauded. It was good to see that some herds had entered steer and carcase competitions or steer grow out competitions to see how their cattle compared with others under commercial conditions.

One of the challenges for small herds and breeds with restricted numbers is to generate useful performance data. The younger breeders of today will need to understand performance information, how it is collected and how to use it. Genetic improvement is going to drive commercial success and the increasing use of genetic technology like DNA testing and integration of this information in future selection decisions is going to happen. Commercial breeders will have this information available from other breeds and to remain competitive, Red Poll breeders must understand and use the technology.

One of the highlights of the Red Poll Challenge was to meet many dedicated breeders and to enjoy wonderful hospitality. I thank you for the opportunity to be a part of a great competition.

Article by: Bob Dent



2019 BRISBANE ROYAL COMPETITION WINNERS

Judged by
Mr Steve Reid
Milmerran QLD



Photo: Junior and Grand Champion female Wilanstie Lacey with exhibitor Paris Whibley.

JUNIOR CHAMPION FEMALE	P.E, S.J, G.S Whibley - Wilanstie Lacey
RESERVE JUNIOR CHAMPION FEMALE	P.E, S.J, G.S Whibley - Wilanstie Wodonga
SENIOR CHAMPION FEMALE	L Newberry - Kookabookra Echoette
RESERVE SENIOR CHAMPION FEMALE	K & N Usher - Eurimbla Still Raining
GRAND CHAMPION FEMALE	P.E, S.J, G.S Whibley - Wilanstie Lacey
JUNIOR CHAMPION BULL	Lagoona Stud - Red Cactus Joeboy
RESERVE JUNIOR CHAMPION BULL	AJ and RM Hancock - Kookabookra Rooster
SENIOR CHAMPION BULL	K & N Usher - Red Rush The Witcher
RESERVE SENIOR CHAMPION BULL	N & P Lee - Omega 3 Felix
GRAND CHAMPION BULL	Lagoona Stud - Red Cactus Joeboy
BREEDERS GROUP	AJ and RM Hancock - Kookabookra Red Poll Stud

2019 SYDNEY ROYAL COMPETITION WINNERS

Judged by
Mr Neil Watson
Watasanta, Tamworth
NSW



Photo: Red Poll best exhibit Redrush The Witcher, with judge Neil Watson, Tamworth, Chloe Gray, Armidale, Alex Cowlshaw, 'Llandillo', Crookwell, breeder Dr Kim Usher, Armidale and Jason Sutherland, Goulburn representing sponsor International Animal Health.

JUNIOR CHAMPION FEMALE	R Draper - Red Cactus Berry
RESERVE JUNIOR CHAMPION FEMALE	S Storm & Sons - Stormley Rhonda
SENIOR CHAMPION FEMALE	S Storm & Sons - Stormley Queen-Bee
RESERVE SENIOR CHAMPION FEMALE	J H Williams & Co - Yongerellen Esma Penny
GRAND CHAMPION FEMALE	S Storm & Sons - Stormley Queen-Bee
JUNIOR CHAMPION BULL	K Usher - Red Rush The Witcher
RESERVE JUNIOR CHAMPION BULL	R Draper - Red Cactus Joeboy
SENIOR CHAMPION BULL	G Ward - Redward Barnaby
GRAND CHAMPION BULL	K Usher - Red Rush The Witcher
BEST EXHIBIT	K Usher - Red Rush The Witcher

2019 PERTH ROYAL COMPETITION WINNERS

*Judged by
Peter Cook*



Photo: Junior and Grand Champion Bull Yongerellen Top Rocky. Photo courtesy of Kane Chatfield Farm Weekly.

JUNIOR CHAMPION FEMALE	Q & S Hooper - Red Sands X-Cellent
RESERVE JUNIOR CHAMPION FEMALE	JH Williams & Co - Yongerellen Nimrodel Rhonda
SENIOR CHAMPION FEMALE	JH Williams & Co - Yongerellen Leah Q-Tee
RESERVE SENIOR CHAMPION FEMALE	O Mc Leary - Rum River Nellie
GRAND CHAMPION FEMALE	Q & S Hooper - Red Sands X-Cellent
JUNIOR CHAMPION BULL	JH Williams & Co - Yongerellen Top Rocky
SENIOR CHAMPION BULL	Q & S Hooper - Red Sands Wonderworld
GRAND CHAMPION BULL	JH Williams & Co - Yongerellen Top Rocky
SUPREME EXHIBIT	JH Williams & Co - Yongerellen Top Rocky
MOST SUCCESSFUL EXHIBITOR	JH Williams & Co

2019 MELBOURNE ROYAL COMPETITION WINNERS

*Judged by
James Mc William*



Photo: Senior and Grand Champion female and Supreme exhibit Stormley Princess held by Cody Storm and calf held by Lacey Kelleher.

JUNIOR CHAMPION FEMALE	R Draper - Red Cactus Maggie
RESERVE JUNIOR CHAMPION FEMALE	S Storm & Sons - Stormley Stella
SENIOR CHAMPION FEMALE	S Storm & Sons - Stormley Princess
RESERVE SENIOR CHAMPION FEMALE	R Draper - Red Cactus Berry
GRAND CHAMPION FEMALE	S Storm & Sons - Stormley Princess
JUNIOR CHAMPION BULL	R Draper - Red Cactus Mac
RESERVE JUNIOR CHAMPION BULL	G Ward - Redward Rumble
SENIOR CHAMPION BULL	G Ward - Redward Dorado
RESERVE SENIOR CHAMPION BULL	G Ward - Redward Barnaby
GRAND CHAMPION BULL	G Ward - Redward Dorado
SUPREME EXHIBIT	S Storm & Sons - Stormley Princess
PRINCESS ROYAL CUP (BEST 3 HEAD)	G Ward - Redward Red Poll Stud
MOST SUCCESSFUL EXHIBITOR	G Ward - Redward Red Poll Stud

South Australia Report

2019 has been another steady year of activity for Red Polls in South Australia. We have been fortunate to have received enough rain throughout our winter growing season to ensure enough feed for the cattle and average crops for harvesting and hay making.

In July, Brittany Abbott was able to spend some time at Oakwood Red Poll Stud before experiencing the SA Heifer Expo. Brittany had a great experience, both at Oakwood and during the expo itself. Congratulations to her for winning the encouragement award for the Junior Judging. Many thanks to Alan and Marilyn Wilson for hosting Brittany and the supply of a Red Poll for the expo.

The 2019 Adelaide Royal Show saw six steers exhibited, five from Oakwood and 1 from Maleer. The steers were mostly overlooked on the hoof as is often the case, but scored very well in a year of exceptionally high scores. The six steers scored 89.4, 87.5, 87.4, 84.9, 84.6 and 79.5 with an Oakwood steer exhibited by the Yorketown area school taking out the Trevilla trophy for highest scoring Red Poll, surprisingly 89.4 points was only good enough for 7th place (out of 30). Well done to the Maleer stud for their Jamestown school steer which was placed third in the MLA prize for Best Domestic Eating Quality Carcase.

Seven Red Polls from the Moyle Park and Wilsdonview studs competed at the Jamestown show this year in a good display of the breed. Congratulations to

Wilsdonview stud Principal Cassie Hughes for winning the senior handler award at the show.

The SA region lost one of its legendary Red Poll Breeders in April with the passing of John 'JF' Malone. John was a much loved character of Red Polls not just in South Australia but nationally and even internationally. It is great to see that the Maleer name looks set to continue with Chris Malone and his son Tom, keeping the Red Poll herd going.

Report by: Peter Wilson



Photo: Long-time entrants - Yorke Peninsula Red Poll breeders Peter and Alan Wilson, Oakwood, Brentwood, with their 43, 18-22 month old steers and heifers which were processed at Teys' Naracoorte this week for the competition.

Huge Interest in Southern Grassfed Carcase Classic

The 11th Annual Southern Grassfed Carcase Classic held at Teys works; Naracoorte South Australia in February 2019 attracted 1,579 entries, making this the largest grassfed competition in Australia.

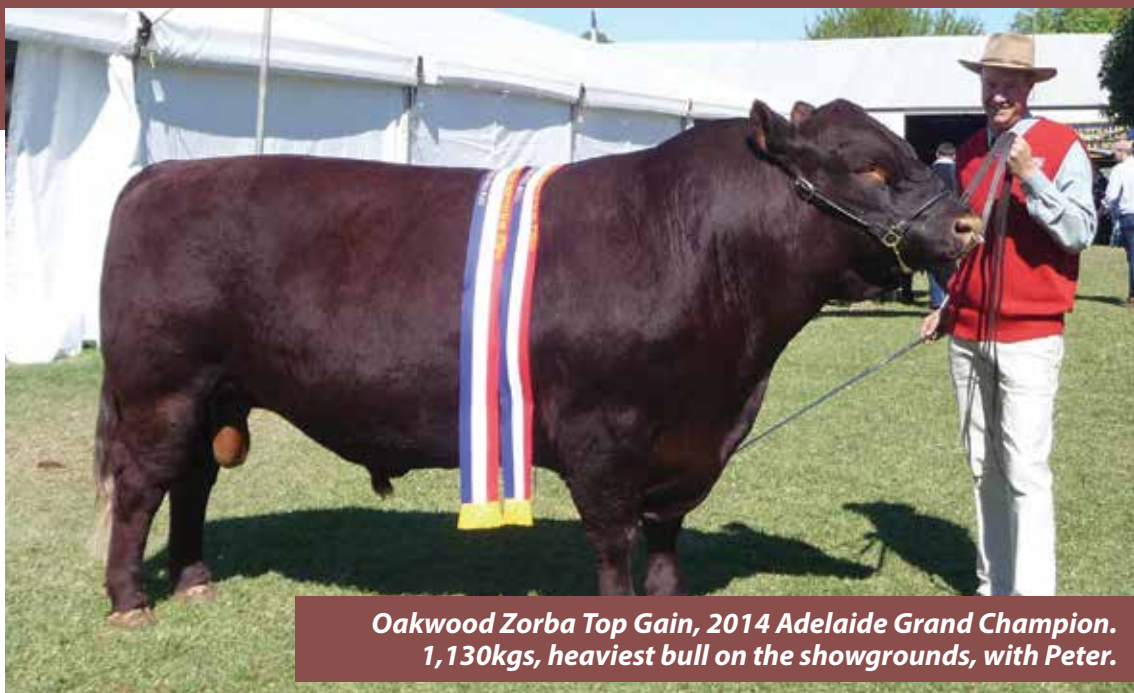
Red Poll carcasses from the Oakwood stud of Peter and Alan Wilson, Minlaton were prominent, with five of the top fifteen carcasses in a class of 222 head, exhibited by them. These carcasses were from Class 1, 0-2 teeth, 180-260kgs DW.

Part of the competition is an award for the ten highest scoring carcasses in the whole competition. The Oakwood entries gained a very credible 3rd from 37 exhibitors.

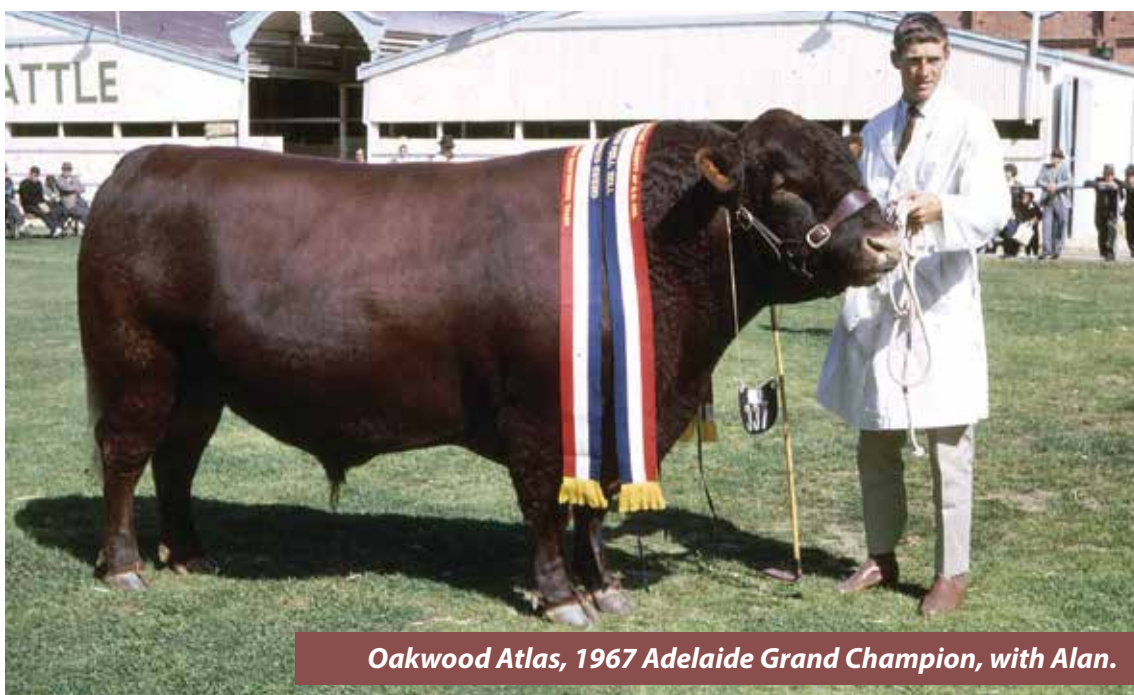
The majority of exhibits by far are from commercial beef producers and most are composites or crosses. Any pure bred entries are usually from stud breeders

Results are announced at a presentation dinner where a percentage of proceeds are given to The Royal Flying Doctor organisation.

WILSONS' OAKWOOD



*Oakwood Zorba Top Gain, 2014 Adelaide Grand Champion.
1,130kgs, heaviest bull on the showgrounds, with Peter.*



Oakwood Atlas, 1967 Adelaide Grand Champion, with Alan.

CONSISTENT • PRODUCTIVE • PREDICTABLE



Alan and Marilyn Wilson
Brentwood via Minlaton SA 5575
Email wilsonbeef@hotmail.com
Phone 0428 434 534

Peter and Kristen Wilson
PO Box 251 Minlaton SA 5575
Email pcklwilson@hotmail.com
Phone 0408 534 071



Red Poll Satisfying a Commercial Market

There are two parts to satisfying a commercial market. Firstly, knowing what the commercial market wants and secondly, having the product that the market wants. This is what marketing is and how it works.

The commercial market mostly wants a product that is risk averse, so profitable and easy to manage. Red Polls are very risk averse but how can we articulate that? One standout quality of Red Polls is longevity that's essentially a consequence of good structure and fertility. You'll only keep a cow or bull in your herd if it's structurally correct and producing better than what another replacement heifer can produce. Would there be data to show the number of Red Poll cows or bulls 15 years or over still included in herd production? The financial benefits of longevity are substantial if commercial breeders only need to replace their females every 8-10 years or longer rather than every 4-5 years and bulls every 4-6 years or longer rather than every 2-3 years. I'd suggest that as a small breed, we've been forced into culling more critically which has resulted in better structured and fertile cattle.

The commercial market wants cattle that can grow and finish well to meet feedlot and other red meat markets. Red Polls have a fine reputation for producing vealers and also the feedlot market at around 14 months. Six month steer trials are an excellent way of demonstrating the feed conversion, finishing ability and quality carcass of the Red Poll. As an interbreed competition it exemplifies the Red Poll breed even further. Steer competitions are also a great way to promote cattle to the commercial market and the carcass results are a great way to learn more about your cattle's genetics. Quite a few Red Poll producers have established local produce markets and have found them very worthwhile.

Temperament hugely effects management for all cattle enterprises. Handling cattle should be enjoyable and safe. Handlers should also be competent around cattle with no yelling or rough handling and especially no electric prodders from livestock carriers. If cattle have good temperaments it's a joy to work with them and much safer when you need to treat or help them in some way, even if it's out in the paddock. Temperament will also affect the carcass quality and finishing ability of cattle. Red Polls have a great reputation regarding temperament and something that would be well worth promoting.

Guaranteeing sale cattle is a great way to allay risk aversion for the commercial market by showing you have confidence in your cattle and that you will stand by the purchaser. However, you should also quantify this with the usual practice of a Vet inspection and either the animal being sold and the difference of the sale being refunded, or providing a replacement animal.

Benchmarking is a really important marketing tool for the commercial market. The most common and most accurate cattle benchmarking tool is Breedplan. It's what industry leaders and commercial buyers want to see when they come to buy breeding cattle. Given that many Red Poll breeders don't use Breedplan or any benchmarking tool, what other benchmarking options are there? Available breed data might be calving ease, birth weights, breeding age of cows and bulls. Accuracy would be skewed for growth data without peer groups. It would also exclude scanning data for carcass quality.

The next job is to tell the message loudly and clearly. This is Promotion and can be done in several ways including social media. Red Poll facebook pages don't cost anything and the Administrators do a great job sharing posts to other cattle facebook pages. Of even greater benefit, is to work with Industry Leaders such as agents and consultants. Industry leaders are especially important because they not only have substantial influence in the market but they also understand what the market wants. Too often we don't listen to the market and think we can just tell the market what they want. Last year I emailed three different agents asking what Red Poll breeders should be doing to improve their commercial market sector. Two agents commented that they couldn't recommend Red Poll cattle to their clients if they didn't have information about them. This is very obvious but how do we do it? We do it by forming a relationship with agents and industry leaders. We talk to them and listen to them and hear what the market wants. We need to start inviting them to anything Red Poll breeders do - shows, open days, cattle camps, Facebook pages and even meetings as guest speakers. I recommend showing an agent your cattle and sitting down afterwards with a cup of tea or beer to 'chew the cud'. The relationship needs to work both ways so we need to listen and hear as well as present our product and its credentials.

Lastly and perhaps most importantly we need to talk and communicate a lot more. Although this doesn't directly connect with the commercial market, it indirectly helps the breed to connect with the commercial market because it strengthens our breed. I'm fascinated by old Red Poll newsletters and Minutes of Meetings dating well back into the 1960's where breeders really knew how to discuss all things 'Red Poll'. At times they were critical but always constructive and respectful and there was a great connection between Office Bearers and the membership at large. Everyone had a voice and everyone was heard so they helped where they could because they felt valued. The breed was sustained and grew. I really encourage our Office Bearers to engage more readily and inclusively with Red Poll members to bring back the enthusiasm and connection with Red Poll planning and decision

making. We have a family saying: "There's no I in team". For engagement to happen National Executive representatives and Regional committee members should encourage discussion with and amongst all members to develop new ideas and actions to grow our breed. Members need to talk comfortably with their representatives to develop their suggestions. Membership is incremental for the breed and can work best if it's a two-way relationship.

The commercial market is an important one for our breed as it's what will grow the demand for Red Poll cattle as well as grow our membership and our Breed at large. Mostly it's a task for Red Poll breeders to develop their own commercial market with their own specific enterprise. National Executive and

Regional Committee's role will be to compile data for benchmarking and develop relationships with Industry Decision makers as well as the Red Poll membership.

I suggest it's the right time for Red Poll stud breeders to have confidence in the breed. Once the drought finishes, there'll be a demand for breeding cattle and Red Poll females and bulls are well credentialed for this role. Hopefully we can establish markets where they've never been before. The Red Poll Strategic Plan is also well under way and we thank National Executive for actioning this but I encourage them to work closely with the membership.

Article by: Jill Coghlan



Photo: Red Poll mature bull and Red Poll weaners.



New South Wales Report

The New South Wales region has been productive over the past 12 months.

The year kicked off with the Sydney Royal Easter show. Red Poll Judging Day at Sydney Show was held on Sunday 14 April. There was an excellent attendance with great atmosphere. Our Judge was Neil Watson from the well regarded Bandaroo Red Poll Stud that dispersed in the early 2000's and exhibitors came from all Regions except S.A. The Supreme Exhibit went to Kim Usher, owner and exhibitor of Red Rush the Witcher who'd been awarded Junior Champion Bull and Grand Champion Bull. Congratulations Kim to you and your wonderful team of excellent handlers. Well deserved. Congratulations also to Lagoon Red Poll stud for achieving 1st for Virtual Taste Test in Class 10 of the steers. NSW Region also thanks the Exhibitors for making our show such a success. We are very grateful for the time, effort and cost you contribute to make this happen and the distances you travel to get here. The NSW region is grateful to have the support of breed stalwarts, exhibitors and onlookers who make this show the success it is. The region is planning for another successful 2020 Royal Sydney Show. Entries close on the 5th of February 2020.

The region has focused on the commercial attributes of the Red Poll and is looking to gain data for promotional materials. It was decided that the region would pay for members to enter steer trials, with the clause that the region can utilise the data collected from these trials. I hope 2020 is a better season so that members can take up this opportunity to gain feedback on their own production and also benefit the breed entirely.

Members across New South Wales have been struggling with all different kinds of challenges. The drought continues to linger across the entire region and more recently the bushfires. The bushfires have come very close to our Red Poll members and the communities they live in. Experiencing this first hand, I certainly understand the stresses and impacts that it has on communities. The drought continues across the state with townships and communities facing or have already faced day zero (meaning the community has completely ran out of water). This has increased pressure for our members with many trucking in stock and domestic water. My thoughts and best wishes are with those grappling and attempting to deal with these struggling times. Here is to a better 2020!!

Report by: Letisha Salzke

Western Australia Report

Seasonal conditions throughout the agricultural areas have been difficult with at best a late opening to the season, very limited winter rainfall and now a dry September. The South West corner has had some October rain but the grain growing areas have missed out leaving a poor finish. The lower great southern has ended up with a reasonable result but upper great southern and central wheat belt have had yields a bit below average with a lot of screening issues. The northern and north eastern wheat belt have had poor yields.

There have been several severe frost events which will effect yields. In particular parts of the Esperance region have had massive damage with large areas cut for hay.

Pastoral areas, both North and Eastern, are suffering from below average rain.

On the cattle front prices are quite solid but are likely to decline rapidly with the dry conditions. For Red Polls the picture is not great with very limited demand either for bulls or females.

Red Polls were shown at Wagin Woolorama and both Perth and Sydney Royals Perth Royal saw three exhibitors with a total of 11 head of stud cattle and 1 Red Poll cross steer.

Under judge Peter Cook (who judged the 2018 Melbourne Feature Show) junior and grand champion bull was the 13 months, 566kg and 105 EMA Yongerellen Top Rocky who beat the junior and grand champion female Red Sands X-Cellent for the breed supreme. Senior female was Yongerellen Leah Q-Tee with Oliver McCleary's Rum River Nellie taking reserve. Red Sands Wonderland won senior bull with Yongerellen Neville Quellington reserve.

In a limited field, Red Sands Wonderland was second to a Black Simmental in the Interbreed Championship.

In the first showing of a red poll cross steer for several years the Red Poll x Lowline just made minimum weight and was overlooked on the hoof but scored a credible 78.3 points to come in 7th /18 in its class on the hook. Top in the class was 83.2 with the overall champion carcase scoring just over 85 points.

Red Polls took on sponsorship for the WA Youth Cattle Handlers camp. 15 year old junior member Oliver McCleary attended the camp and did well in the junior judging event which he then repeated with a good result in the state final at the Royal Show getting into the final ten.

Report by: Murray Williams

Yongerellen
Home of the Grey Kangaroo

Yongerellen Top Rocky
***Junior and Grand Champion Bull and
Supreme Red Poll 2019 - Perth Royal Show***



*Photo by Kane Chatfield
Farm Weekly*

TOP QUALITY CATTLE FOR SALE
2 BULLS - NARROGIN INVITATION SALE
FEBRUARY 25TH 2020

CONTACT MURRAY
(08) 9645 5220 0429 455 220
yongerellen@activ8.net.au

South Australia Junior Heifer Expo



Brittany Abbott on receiving the Encouragement Award for the Junior Judging at the South Australian Junior heifer Expo.

As the Red Poll Youth Award winner Brittany attended the Junior Heifer expo with a steer supplied by Oakwood Red Polls (Wilson Family). Brittany competed in the intermediate section against some very strong competition.

Beginning the day with an early start, I flew to Adelaide on the 12th of July and met Alan Wilson of the Oakwood Red Poll Stud at the airport. The trip to the Wilson's farm near Brentwood was quite an eye opener as exceedingly large paddocks were filled with green crops that showed a good start to the cropping season.

Arriving at their home, I was introduced to Marilyn and warmly welcomed into their home. Following introductions, I met Oakwood Hercules which was my steer that I would be taking to the heifer expo. In the following days I spent most of my time working with the steer, looking at the Oakwood herd and learning as much

as possible from Allan. Marilyn cooked up beautiful meals each night the followed with conversations about cattle, previous World Congresses and shows.

On Monday morning we finished packing and drove to the Adelaide show grounds where the South Australian Junior Heifer Expo was being held. The following day consisted with lectures such as judging, trace elements, marketing, structure, new technologies, auctioneering, ring craft and carcass breakdown. The classes were well coordinated with excellent speakers that delivered intriguing presentations. One of my favourite classes was the carcass breakdown which demonstrated the different cuts of meat on a live animal and then to a carcass that so happened to be a Red Poll heifer. One of the main focuses on this class was utilising the benefits from MSA graded beef and how eating quality has become a large movement within the industry.

Wednesday consisted of junior judging and cattle classes and provided a chance to spend more time leading the steer on the sawdust and the challenge of keeping my white coat clean. The intermediate class of 55 participants judged four shorthorn heifers in a limited time of six minutes and then shared their comments on the class. The Wilson's and Richard Daley arrived on Thursday for the handle classes, the classes were hotly contested with some highly talented handlers. During the presentations I was fortunate enough to receive the encouragement award for junior judging.

I would like to extend my thanks to Alan and Marilyn for their kind hospitality and the National Red Poll Executive for this wonderful opportunity to attend the 2019 South Australian Junior Heifer Expo. I would also highly recommend this opportunity to all young cattle enthusiasts as it provides an environment filled with knowledge and opportunities as well as meeting and making new friends.

Report by: Brittany Abbott

MALEER RED POLLS

Maleer Partners - Jamestown SA



QUALITY CATTLE BRED WITH CARE FOR OVER 50 YEARS

Functioning cattle bred under paddock conditions for stud and commercial use. Bulls and females available, your inspection invited.

For all enquiries Chris and Danielle Malone
Email maleer4@bigpond.com
Ph (08) 8665 4037 **Mobile** 0418 807 414

Excellence in Red Poll Breed Development Awardee, Richard Daley

Red Poll Cattle and Me

I have always wanted certainty in everything I have done and when I started breeding cattle in 1980 I thought you just put the right bull with a good looking cow and the offspring would be perfect. How naïve can you be. Firstly what is the right bull and secondly the good looking cow does not always produce what you expect. I needed some way of solving this dilemma. It was not until 1994, while attending the Red Poll World Congress in Australia and listening to John Yelland, a Poll Hereford breeder from Victoria who introduced me to the benefits of BREEDPLAN that I felt I had a tool to improve my herd. John, whose family had successfully shown cattle since the early 1900's and had weight and breeding records from that time, said they had not made any significant improvement in their cattle over time until they began to use EBV's and could identify those bulls that would be better performers particularly for growth. Since then of course many more traits have been recorded and indices produced so that bull buyers of today can select animals that will improve their target markets.

The problem with using a bull selected on phenotype alone as I had done for years by buying a bull at a show or sale that I thought was my type is that it takes two years to be able to analyse the progeny and I found that some years I got better looking progeny than others but generally the herd remained the same. Admittedly I could make them look better by giving them extra feed but in doing so I was just fooling myself that my animals were getting better. What really made me question what I was doing was when a potential buyer of a bull I had at Perth Royal asked me if I had any performance data to substantiate what I was telling him about my bull. Well I tried to tell him about the pedigree and what good cows I had at home and how this bull was a great breeder and he simply said where is your evidence. Consequently I didn't make the sale.

Over the years I have attended seminars on breeding cattle and followed with interest the development of the bovine genome research by the CRC for Beef, which has now been wound up, and attended BREEDPLAN workshops as well as visited abattoir chillers. It took me a long time to realise what BREEDPLAN was all about and how I could apply it to my overall herd plan and then to our breed in general. There is a degree of discipline on behalf of the breeder to get good results. You need a set of scales. For any breeder this is a good idea as you become familiar with what your cattle weigh at various ages and this takes the guesswork out of marketing. It also allows you to target weights for mating and meeting feedlot entry weights. Once you have the scales then you have to collect data religiously at the recommended times every year. In addition, I started scanning my bulls and replacement

heifers annually to identify carcase traits and measuring scrotum size, hip height and recording all calves born, whether dead or alive, ease of calving and fat scores. Using AI will help you get EBV's for gestation length and doing calf weights at birth allows you to identify the easier calvers.

So what did I do first? Well I had to start my herd from scratch by buying in cows. Initially I should have bought an old proven stud cow in calf with a heifer calf at foot and paid for the value. I didn't do this but I did buy some reasonable cows either at dispersal sales where you do have the opportunity to buy value or at the national sales we used to have years ago. As my herd grew so did my experience. Although I knew Red Polls were good breeders I thought I should be able to do better than I was. To improve the fertility of my females I decided to put my heifers under pressure. They were mated to my stud bull at fourteen months and any that did not deliver successfully were culled. Heifer selection was initially on those that made my minimum mating weight which in the early days was 345Kgs but in recent times my heifers are well above this weight. The problem was how did I know that the bull I used was my best bull. It was here that I started to select bulls with EBV's [BREEDPLAN performance records]. Initially I concentrated on growth EBV's but as my data base and trait recordings improved I was able to look for a whole range of traits. Today I still like good growth figures; unfortunately I have used all the best and need everyone else to get data out there and hope some exceptional animal turns up again, but I look at birth weights, gestation length, milk, fertility, mature cow weight, and carcase data. There are phenotypic traits to consider like temperament and structure but if the bull doesn't have the desired EBV's then he is not considered. Cows that have longevity in my herd will be those that produce the best calves at weaning. I can predict who they are because I have their performance data from BREEDPLAN and as I select my replacement heifers and sale bulls from those records and have done so now since 1995 the weaning weights and growth rates have got better every year since. This means that I produce more kilograms of beef from the same acreage annually and it increased my farm return. However in the past few years my improvement has plateaued, particularly in growth, due to the scarcity of high performance bulls on record.

In response to the levelling-off of my EBV values I have sought genetics from other bulls that will improve traits where I may have not performed as well. This does mean that there may be a drop in say my growth traits a little but I gain in carcase traits. A compromise for the better I think as my dams will still contribute 50% to improve the poorer trait from the bull. I also introduce new genetics through AI. This way I reduce the risk of



increasing genetic variation, I can create an EBV for gestation length and prevent the risk of inbreeding. It takes a long time to identify those bad genetic traits inherited in a herd so I like to reduce my genetic variation by maintaining homogeneity in my females. This can't be done overnight.

It has always been my belief that in Red Poll cattle we have the complete animal. I looked at many breeds as President of S.A. beef and during my time as Federal President spoke with many people in the industry and my belief in our breed has not wavered. The major breeds have done a lot of work using BREEDPLAN to lift their breed performance. The Poll Hereford have found muscle, Bos Indicus have improved fertility, Limousin and Charolais have identified fat, Shorthorns have got growth and Angus have used it as a promotion tool. Of all the breeds Red Polls have more to offer and are under-utilised.

It has always been my desire to influence the commercial industry to use our genetics. By using BREEDPLAN every Red Poll bull or cow becomes part of the national Red Poll herd and as such we can identify those genetic improvers that could be collectively marketed to the industry. As individuals we are not able to compete with the marketing and promotion of the larger breeds but if we work as a single herd and market lines of bulls we could once again influence bovine genetics as we once did for the betterment of the industry in general. The progeny test group that formed some years ago now did have this as their aim. At this stage it is a work in progress but could easily be a reality if all breeders started collecting data so all Red Poll cattle are on the BREEDPLAN data base and then we too could produce indices for bulls with commercial desirable traits. The industry would be a lot better for it.

Science has tried to identify particular gene sites on the bovine chromosomes responsible for various desirable traits in cattle but with limited success as traits can be influenced by multiple gene interactions. Also what a group of genes does in one type of cattle they may not do the same in another. The genes identified for growth in the dog are the same for both Great Dane and Dachshund but the result is completely different. So although EBV's are a statistical representation of genes they are currently the best we have for assigning a genetic value for a trait to an animal so we can identify the best performers for that trait. Where most people have trouble is understanding that BREEDPLAN accounts for the different environments that herds are raised on so animals can be evaluated across environments. To better understand the workings of the BREEDPLAN program their website offers free seminars and of course we have our own Red Poll BREEDPLAN officer who you can contact. Performance testing can be one of your main selection tools in your breeding program so just get started.

Report by: Richard Daley

I had the pleasure of visiting Moyle Park in 2015, where Richard and I sat down and discussed performance recording and genetic progress in his herd. While there, Richard took great delight in showing me his best cow; while not as conditioned as some of the other cows there, she had calved consistently each year, put everything she had in to raising her calf and had the best BREEDPLAN figures of his cow herd. Without the effort Richard had put into performance recording over many years, she may not have caught his eye. Richard explained to me that this was why he was so passionate about recording information with BREEDPLAN; if you don't record data then you don't know what the genetics are doing. **Congratulations Richard, Catriona Millen - Technical Officer SBTS**

25.08.1940 – 31.03.2019

Vale John Malone Maleer Red Poll Stud

The state's rural sector has lost a devoted cattle producer, agricultural show leader, advocate and forward-thinking community volunteer, with the passing of John Malone, Bundaleer, on March 31.

John grew up on the family farm at Bundaleer, just south of Jamestown, with his sisters Maureen, Trish, Theresa, Mary, Ann and Gerardine, and brother Vincent. John returned to the farm at 15, working alongside his father, and also enjoying social life in his local community, playing football and tennis and attending Rural Youth gatherings.

While the Malones had traditionally been sheep and grain producers, John and his brother Vin started breeding Red Poll cattle in 1966, using Woodleigh and Oakwood genetics.

John's unwavering support for Red Poll cattle, his knowledge and positive outlook earned him widespread respect as he took on key breed and industry roles. In 1971, John and Veronica registered Maleer Red Poll Stud with their half of the foundation herd.

As a breeder and exhibitor, John achieved great success across four decades with an abundance of ribbons at the Royal Adelaide Show, Sydney Royal Easter Show and Wodonga Show and Sale in Vic, plus countless country shows.

But for John, these successes were far outweighed by friendships he made in and out of the cattle ring, such as his love of life and people.

John also became a sought-after cattle judge, this role taking him to royal and country shows across Australia and to New Zealand. He became an enthusiastic contributor to the Royal Adelaide Show as a beef cattle steward, and supporter of the led steer program, beef cattle junior judging and SA Junior Heifer Expo, acknowledged with a Long Serving Volunteer Award in 2010.

Regionally, he served as president of the Northern Agricultural Shows Association from 1984 to 86. He was chairman of the Agricultural Societies Council from 1993 to 1996 and served on the executive of this council for more than ten years.

John's unwavering support for Red Poll cattle, his knowledge and positive outlook earned him widespread respect as he took on key breed and industry roles. This included more than 45 years on the South Australian Red Poll Society committee, and 20 years as delegate to the federal council of Red Poll Cattle Society. During this time, John served three terms as federal president of the Red Poll Society and five years as state president.



John and Veronica thoroughly enjoyed international trips with the Red Poll Society North America/Canada and to South America and were regular hosts of international visitors at Bundaleer.

March 2019 Australian Red Poll Cattle Breeders Incorporated awarded life membership to John for his outstanding contribution to the industry. He adored his community, his cattle, all things Bundaleer, and most of all, his family.

Mr Malone was diagnosed with cancer two years ago and with the care and attention of his wife Veronica and his family he was able to stay at home until just days before his passing.

He is survived by Veronica, children Mary-Jane and Christopher and five grandchildren.

**Courtesy: www.stockjournal.com.au
11 April 2019**

11.06.1948 – 03.05.2019

Vale Doug D'Oliver St Cerry Red Poll Stud

Doug D'Oliver supported the Red Poll "On Farm Challenge" Competition from 2010 until his last one in 2019. This is a competition where the appointed judge is driven to the properties where cattle have been entered in the competition for assessment. This allows Red Poll Breeders to have their cattle assessed without the

high cost and effort of show entry which can include teaching them to lead, preparing them for washing, clipping, transportation and housing at the show for several days. In past years, Doug assisted the process by driving the judge to herds in the east of Victoria and then returning to my property in Pheasant Creek where another member, Don Castle,

took the judge to herds in central, northern and western districts. Doug entered his cattle in every "On Farm Challenge" from 2009 until his last one in 2019, but he was not well enough to assist with his former driving activities. He believed that the On Farm Challenge Competition was an ideal way for breeders to improve their herds by having their

cattle assessed in this way.

Doug regularly supported the promotion of Red Poll Cattle at Farm World (Lardner Park, Warragul) annually where the Society had a site with cattle and promotional goods. He also supported Red Poll Sales and regularly purchased stock to add to his well-cared for herd. In past years, his herd included Angus cattle as well as his beloved Red Polls, but with failing health, he reduced the herd to just Red Polls. Doug was preparing to start breeding his cattle using artificial insemination techniques and had purchased suitable semen from top quality bulls.

Doug trained racehorses near Traralgon in earlier times and, more recently worked in the insurance industry, particularly in the Claims section in a company in Pakenham. His expertise in the insurance industry was a great asset to discussions at meetings of the Society and his contributions to those meetings were always valued.

As a result of attending an International Red Poll Conference in New Zealand, Doug joined the New Zealand Red Poll Cattle Breeders Association, made several visits to NZ on various occasions and enjoyed the company of their members.

Doug was a highly valued Member of the Australian Red Poll Cattle Breeders Inc. and he will be sorely missed.



LIFE MEMBER

18.01.1927 – 26.02.2019

VALE Harrold Spalding Cathro Red Poll Stud

Harrold Spalding was born in Geelong on the 18 January 1927. He lived in Lara most of his life, attending school and working on the family farm and associated with the wider family business in Lara.

He married his wife Shirlie in October 1956 and they started their married life together on Harrold's farm in Lara raising sheep. After a couple of years Harrold had a change of heart and decided that he preferred cattle to sheep and went to a Red Poll sale at the Beer family farm. This started Harrold's love of the Red Poll cattle for which he has been involved in for many years.

Harrold established his Red Poll at Lara calling it "Cathro", this name was derived from the hymn that was played at Harrold and Shirlie's wedding to the music "Strath-Cathro" hence they used the name Cathro for their stud.

Harrold and his family moved from Lara to Smythes Creek at Ballarat in January 1970 where he continued to run "Cathro" and establish it

for breeding and rearing of show cattle. After many years at Smythes creek Harrold moved to Myamyn near Portland for a few years prior to retiring and moving to Cardigan Village near Ballarat.

During his time with the Red Poll breed Harrold was deeply involved in the breeding, rearing and showing of stud cattle. This included the breeding of steers for the meat market. He entered his breed in several carcass competitions with considerable success and also won several best of breed prizes for his cattle at the agricultural shows around the country.

Harrold was involved in the judging of cattle at many country shows and the Royal Melbourne show on several occasions. He was one of the first members to join BREEDPLAN for performance recording.

Harrold was also deeply involved in the committee of the Red Poll Society, taking the role of publicity officer for many years. During this time he produced the newsletter



for the society and travelled widely to meet with different stud owners and write about them in the newsletter. For his commitment to the breed and the society Harrold was made a Life Member.

Harrold enjoyed the friendship of his fellow breeders and their families.

He died in his 92nd year and is at peace with his lord and loved by his family.

Shirlie Spalding and family: Glynis, Heather and Peter, and Grandchildren and Great Grandchildren.

NSW Membership Directory

NSW Full Members

M J Bassula (HMB RED PHOENIX)

Po Box 197 Tumbarumba NSW 2653
P 02 6948 4098 M 0427 482 289
E redphoenixone@skymesh.com.au

Stephen Boyd (BEL BELLAROSA)

Po Box 261 Bellingen NSW 2454
M 0421 761 675 E kiniagman1@gmail.com

A Carroll & B Adams (BBH BOTTLEBRUSH HILL)

C/- Long Flat Post Office, Long Flat NSW 2446
M 0434 626 082 E andrew.l.carroll18@gmail.com

B Clarke (B RHOSLLAN)

7 Richardson Street, Goonellabah NSW 2480
P 02 6624 1268

I A & J Coghlan (IJC EURIMBLA)

Eurimbla Red Poll Stud
148 Rodgers Road East, Gerogery NSW 2642
P 02 6026 0630 M 0412 650 050
E eurimbla@live.com.au

A & C Couch (ND NYALINDEE)

23 Adamson Crescent, Wanniasa ACT 2903
P 02 6231 5440 M 0400 187 260
E alan@couch.net.au

R E & F R Drysdale (KFD WILLORN)

285 Upper Rollands Plains Road, Rollands Plains NSW 2441
P 02 6585 8022 M 0427 858 022
E willorn47@bigpond.com

N Faseas (SS SPLENDID)

167 Private Access M1, Mulbring NSW 2323
P 02 4938 0093 M 0408 498 233
E nick@paragoncivil.com.au

J A Halpin (DAS GLENROSSAL)

Po Box 238, Figtree NSW 2525
P 02 4842 7188 M 0412 332 640
E jude.annel@hotmail.com

T & G Hill (IP INGLEDEN)

Eurunga Culcairn NSW 2660
P 0429 042 979 M 0429 636 527
E eurunga18@gmail.com

G Mulcahy (GJM WIRAKIE)

1027 Horsley Drive, Wetherill Park NSW 2164
P 02 9604 5846 M 0418 417 899
E garrick.mulcahy@bigpond.com

O & A Reinhardt (OAR PEPPERVALE)

23 McClung Street, Gungahlin ACT 2912
M 0411 253 933 E owen@peppervale.com.au

L Salzke (JLS JACKPOT)

5 Bowler Street, Braidwood NSW 2622
M 0428 759 685 E teash_13@hotmail.com

C & M Smith (LCS BELAULT)

Belault - 1201 Mayfield Road, Tarago NSW 2580
P 02 4842 7188 M 0427 827 992 E belault@gmail.com

N & M Sorial (MCS MCSORIAL)

Wongajong - 226 Gurrundah Road
Baw Baw NSW 2580 P 02 4822 8402 M 0410 483 014
E wongajong_farm@bigpond.com

RJ & SD Wilkinson (RSW BALADEEN)

1260 The Northern Road, Bringelly NSW 2556
M 0413 581 098 E rjwilko_bal@hotmail.com

NSW Junior Members

Bellingen High School (BHY BELL-HY)

Po Box 203 Bellingen NSW 2454
P 02 6655 1315 E bellingen-h.school@det.nsw.edu.au

Bowraville Central School (BOW BOWRAVILLE)

High Street, Bowraville NSW 2449
P 02 6564 7162 M 0450 957 883
E bowraville-c.school@det.nsw.edu.au

J Osborn (JNA KING ESTATE)

99 Sargents Road, Ebenezer NSW 2756
M 0418 483 044 E james.osborn@elders.com.au

A J Leicester

14 Swinbourne Cr, Wetherill Park NSW 2164
M 0403 421 379 E aidan_itunes@hotmail.com.au

Ang Babana (MFH MODELFARMS)

Model Farms High - Gooden Drive, Baulkham Hills NSW 2153
P 02 9624 3133 M 0404 437 264
E modelfarms-h.school@det.nsw.edu.au

Tumbarumba High School (TUM)

101 Tooma Road, Tumbarumba NSW 2653
P 02 6948 2500 M 0431 218 608
E tumbarumba-h.school@det.nsw.edu.au

Wauchope High School (WHS WAUCHOPE HIGH)

Nelson Street, Wauchope NSW 2446
P 02 6585 1400 E adrian.palmer@det.nsw.edu.au

NSW Magazine Members

Ian & Ruth Henderson (IR DENERSON)

58 Cedarwood Drive, Cherrybrook NSW 2126
P 02 9875 2194 M 0417 682 257
E avalonbinda@bigpond.com

NSW Commercial Members

Ballycastle Pastoral Co (BPC)

Bally Castle - 2063 Range Road, Goulburn NSW 2580
P 02 4829 2353 M 0412 481 309 E ballycastle@mac.com

J & B Caddy (JBY)

Po Box 959 Tamworth NSW 2340 P 02 6760 9177

Keith R Carew (KRC)

6 Gray Street, Henley NSW 2111
P 02 9816 4572 M 0419 997 328
E keithrcarew@gmail.com

K H & K B Corbett (KKC)

5 Gillett Street, South Grafton NSW 2460 P 02 6642 6315

BG Godfrey (HRG HURIE PARK)

Hurie Park - 553 Wherrol Flat Road, Wherrol Flat NSW 2429
P 02 6550 7297

E Herbert (TOK LAZY TOK)

768 Boomey Lane, Boomey Via Molong NSW 2866
P 02 6332 3745 M 0428 412 787
E lazytok@southernphone.com.au

PE Munge (PEM)

"Shannon" - Guinema Road, Bugaldie NSW 2357
P 02 6843 4459 E pcmunge@bigpond.com

TE Rumbel (TER)

835 Mill Creek Road, Stroud NSW 2425
P 02 4994 5426 M 02 4994 5223

Wooling Pastoral Company (WPC)

Llandillo - 5594 Boorowa Road, Crookwell NSW 2583
P 02 4836 5244 M 0407 571 521
E alexkc@wooling.com.au

NNSW/QLD Membership Directory

NNSW/QLD – Full Members

R Angas-Freney (HCA TARRA)

407 Goldburg Road, North Deep Creek QLD 4570
P 0407 142 213 E rangas6@bigpond.com

B A & L T Beckham (TQY TRANQUILITY)

Po Box 154 Casino NSW 2470
P 02 6663 7127 M 0409 032 218

G J & D I Brassington (GDB BROADACRE VALLEY)

Po Box 20 Helidon QLD 4344
P 07 4697 6090 M 0407 976 090
E daphne@brassingtonfam.com

R.G. Burness (HT MOA VALE)

Po Box 448 Coolangatta QLD 4225
P 07 5590 7148 M 0404 239 923

KA & Mr Clarke (MBV MISTY BELL VISTA)

Po Box 324 Bellingen NSW 2454
P 02 6655 0202 M 0456 109 246
E michael.r.clarke@gmail.com

RC & AC Dawes (RJ PICCABEEN VALLEY)

Rosemont - 69 Piggabeen Road, Piggabeen NSW 2486
M 0429 909 463

M C & D J Dillon (AMD INGLEWOOD)

24 Central Park Drive, Wollongbar NSW 2477
P 02 6628 0839 M 0414 280 369
E d.j.dillon@westnet.com.au

K Goulding & D Jensen (KAT MINYON)

Po Box 3045 Lismore NSW 2480
P 02 6663 1206 M 0488 536 923 M 0428 221 077
E katgo@mullum.com.au

AJ, RM & DJ Hancock (RAH KOOKABOOKRA)

Yarraldool - Pinkett Road, Glen Innes NSW 2370
P 02 6733 4666 M 0432 581 493
E hancock45@hotmail.com

P Hancock (PMH GLENLEIGH)

"Wellrock" - 110 Blacks Road, Glen Innes NSW 2370
P 02 6732 5038 M 0427 190 448

L Herzig (LDH TALGAI VALE)

Po Box 39 Clifton QLD 4361
P 07 4697 3204

N & P Lee (NAL OMEGA 3)

"Bindaree" - 51 Claremont Road, Quirindi NSW 2343
P 02 6747 4674 M 0429 990 388
E abbottlee@bigpond.com

RA, VA, TD, BA & EL Light (TEL LAGOONA)

"Lagoon" - 191 Dumaresq Road, Armidale NSW 2350
P 02 6775 1129 M 0458 744 552
E lagoona191@bigpond.com

Longley Red Poll Stud (FFI LONGLEY)

97 Dyraaba Street, Casino NSW 2470
P 02 6660 1108 M 0408 431 104
E accounts@richdairies.com

K & N Usher (NLC RED RUSH)

62 Munday Lane, Saumarez Ponds NSW 2350
P 02 6775 1069 M 0408 073 427
E kim.usher@une.edu.au

S & K Williams (WIL WILANSTIE)

Goondidi - 364 Woodlands Road, Greenmount QLD 4359
M 0421 281 855 M 0428 458 535
E steve76kristie@gmail.com

NNSW/QLD Junior Members

E Cunningham (ECL ROCKVIEW)

Carndhu - 1 Carndhu Road, Armidale NSW 2350
P 02 6775 8345 M 0499 221 528
E freddie.74@live.com

Harrison Hurle (HUR)

Ranchwood - 83 Wallanol Road, Moree NSW 2400
M 0428 651 045 E bennkim@bigpond.com

J McClenaghan (JES LITTLELENAGHAN)

35 Swan Street, Inverell NSW 2360
M 0467 189 511 E littlelenaghanredpolls@gmail.com

Tyler Martindale (TYL)

11 Valleyview Drive, Bellingen NSW 2454
M 0437 550 031 E martindale@westnet.com.au

Lilleah Newberry (LGN LILVALE)

572 Square Range Road, Glen Innes NSW 2370
P 02 6733 4653 M 0438 324 606
E thewildnewberrys@activ8.net.au

Caitlin Usher (USH)

14 Freedom Crescent, South Ripley QLD 4306
M 0408 396 526 E nathan.usher@cummins.com

PE, SJ & GS Whibley (GPS GPS)

920 Stanester Road, Pallamallawa NSW 2399
P 02 6754 9510 M 0458 342 091

S Woods (WOO)

60 Munday Lane, Saumarez Ponds NSW 2350
M 0422 673 074 E samwoods1123456789@gmail.com

PW Muller (PWM)

51 Merino Street, Toowoomba QLD 4350
P 07 4635 1471 M 0487 171 835
E peter.muller5@bigpond.com

B.K. & T.A. Munt

Rhodesmount
3539 New England Highway, Wutul QLD 4352
P 07 4692 6196 E btasmmunt@skymesh.com.au

G.A. & J.J. Wehl (MTR RED RIDGE)

36 Mt Rascal Road, M/S 1497 Toowoomba QLD 4350
P 07 4630 1109 M 0428 717 178
E jeanette.wehl@gmail.com

NNSW/QLD Commercial Members

J Bockman & J Rhea (TBK TANAMERAH)

2376 Warwick-Allora Road, Allora QLD 4362
P 0437 551 842 E jack.n.jill@bigpond.com

I & J Hopper (CMH CALLEMONDAH PARK)

Callemondah - Porter's Gap MS 360, Bell QLD 4408
P 07 5594 0980 M 07 5594 0228

I & B Hutchinson (BIH JINDAVICK)

Wirrabilla - Limestone Ridges Road
Peak Crossing QLD 4306
P 07 5467 2136 M 0410 431 850
E jindavick@bigpond.com

SA Membership Directory

SA – Life Member

R.M. Wilson & Son (RMW OAKWOOD)
Oakwood - Brentwood via Minlaton SA 5575
P 08 8853 4223 M 0428 434 534
E wilsonbeef@hotmail.com

J K Graham & Co. (KGW VIRANGRA)
Po Box 130 Ardrossan SA 5571
P 08 8837 3327 M 0438 373577
E vkrowntree@gmail.com

SA – Full Members

DR RWR & KL Daley (MPS MOYLE PARK)
Po Box 169 Jamestown SA 5491
P 08 8664 1463 M 0438 641 463
E moylepark@ozemail.com.au

DS & SJ Lines (SRR STOCKRIDGE)
Po Box 712 Gawler SA 5118
M 0415 797506 E david@stockridge.com.au

W.J. McCallum (MDS WINDY PLAINS)
Po Box 133 Booleroo Centre SA 5482 P 08 8666 6062

Maleer Partners (VJM MALEER)
CJ & DM Malone - Po Box 47 Jamestown SA 5491
P 08 8665 4037 M 0418 807 414
E maleer4@bigpond.com

Peter Wilson
Po Box 251 Minlaton SA 5575
P 08 8853 4104 M 0408 534 071
E pcklwilson@hotmail.com

SA – Junior Members

C Hughes (WDV WILSDONVIEW)
Po Box 245 Booleroo Centre SA 5482
P 0448 760 444 M 0488 442 128
E casskylie@gmail.com E huggelle@gmail.com

SA – Magazine Members

IL Rodgers (RHB GUM HILL)
17 Arthur Street, Cummins SA 5631
P 08 86762614

SA – Commercial Members

P J & C A Hay (HAY RUBY LACE)
99 Lonnavaale Road, Judbury TAS 7109 P 03 6237 0092

R.H.W. & S.D. Sampson
Po Box 176 Strathalbyn SA 5255 P 08 8536 6021

T.A. & H. Sismey (TJ OTWAY)
Po Box 1161 Naracoorte SA 5271 P 08 8762 3186

J Stockham (REG REGALER RED)
Po Box 51 Woodside SA 5244 P 08 8538 7027

VIC Membership Directory

VIC Life Members

R Draper (MRD RED CACTUS)
75 Running Creek Rd, Arthurs Creek VIC 3099
P 0428 510 252 M 0428 510 252
E redcactus@bigpond.com

VIC Full Members

GM & KJ Abbott (EMA TURANGA)
287 Kolora Lane, Kolora VIC 3265
P 03 5592 7224 M 0438 922 313
E gk.abbott@bigpond.com

Cabbage Tree Hill Pastoral Co (CTH RED HOT)
Po Box 123, Buninyong VIC 3357
P 03 5341 3133 M 0419 547 181
E redhotpolls@outlook.com

D R Castle (DBC KOALLAH PARK)
2205 Princes Highway, Stoneyford VIC 3260
M 0417 169 914

G L & J J Crowe (GJC GJC)
7 Nunn Street, Benalla VIC 3672 P 03 5762 4552

B E & L E Johnson (BLJ LYNBARRY)
395 Extons Road, Kinglake Central VIC 3757
P 03 5786 1431 E be.johnson@bigpond.com

F J & M D McCormack (F+M CYPRESS)
Po Box 59 Mansfield VIC 3724
P 03 5775 2074 M 0409 951 903

F & A K Moya (MFA TIRASLEA)
560 Seven Mile Road, Nar Nar Goon VIC 3812
P 03 5942 5473 E a.k.moya@bigpond.net.au

A & J Munro (SBR SUMMER BRAE)
134 Moormbool Road, Costerfield VIC 3523
P 03 5794 9219 M 0439 782 198

DN Payne (HP WOODBURN)
Po Box 160 Kilmore VIC 3764
P 03 5782 1002 M 0418 587 655
E dnpayne@bigpond.net.au

J Rand (BAL BALLA BALLA)
Balla Balla - 1300 Baxter-Tooradin Road
Cannons Creek VIC 3977
M 0419 337 760 E judyrand@ozemail.com.au

Semex Pty Ltd (SMX SEMEX)
Semex Pty Ltd - Po Box 509 Melton VIC 3337
P 03 9743 0344 P 03 9743 0355
E semex@semex.com.au

I A & N F Staff (NIS SOPHRONITES)
65 Burtons Road, Pheasant Creek VIC 3757
P 03 5786 5251 M 0411 314 501
E ianstaff@techinfo.com.au

SJ & JM Storm & Sons (SJS STORMLEY)
51 Neimur Street, Barham NSW 2732
P 03 5453 2140 E stormley5@gmail.com

G Ward (DGW REDWARD)
Po Box 460 Altona North VIC 3025
M 0417 558 508 E honerv@gmail.com

VIC Junior Members

C Mackelmann (CMC GLENWYN)
Glenwyn Red Poll Stud
208 Jenkins Road, Congupna VIC 3633
P 03 5829 9855 E carlie.mackelmann@gmail.com

V Hausler (VLM CINNABAR)
Po Box 357 Euroa VIC 3666
M 0417 336 708 E verity.hausler@gmail.com

VIC Commercial Members

RP & J Aitken (RJA)

457 Velore Road, Denison VIC 3858
P 03 5149 2467 E jewels@wideband.net.au

T & A Arnold (TAA GLEN ALVIE)

1075 Echuca Road, Mooroopna North VIC 3629
P 03 5829 0289 M 0418 549 031
E arnold.a.t@bigpond.com.au

WL Bath (WLB BILTMORE)

Po Box 50 Balmoral VIC 3407
P 03 5570 1327 E bmbath@bigpond.com

J Buxton (JBN)

641 Sale Maffra Road, Bundalaguah VIC 3851
P 03 5147 2403 E jcbuxton3@outlook.com

RJ Kelleher (RJK)

Navarre VIC 3384
P 03 5357 4100

P Mawdsley (FMF FINMAW)

445 Mardan-Dumbalk Road, Dumbalk VIC 3956
M 0413 455 456 E info@finmawfarm.com.au

TW Robbins (NAA NATHANA)

C/O K Coen 167 McLaughlans Lane, Plenty VIC 3090
M 0419 380 301 E tony.robbs@jackhouse.biz

S Wainwright (SWW)

Po Box 601 Emerald VIC 3782
E kymmitsu@gmail.com

WA Membership Directory

WA Life Members

J H Williams & Co (J6H YONGERELLEN)

Po Box 100 Quairading WA 6383
P 08 9645 5220 M 0429 455 220 (txt only)
E yongerellen@activ8.net.au

WA Full Members

E & J Ghilarducci (EIG KARRADACE)

1189 Brookton Highway, Karragullen WA 6111
P 08 9397 5936 M 0418 913 381
E paulghil@yahoo.com.au

Q & S Hooper (QPH RED SANDS)

Po Box 94 Wembley WA 6913
P 08 9242 8894 M 0419 041 220
E redsandsredpoll@yahoo.com.au

L & A Longford (LA6 LE TOPAZ)

Po Box 100 Quairading WA 6383
P 0458 560 853 M 0428 940 379
E alex_longford96@hotmail.com

WA Junior Members

Oliver McLeary (RUM RUM RIVER)

Po Box 53 Corrigin WA 6315
M 0497 193 447 E oamcleary@gmail.com
E randcmcleary@gmail.com

WA Commercial Members

Coranning Pty Ltd (NB4 CORANNING)

1460 North Wandering Road Wandering WA 6308
P 08 9887 6030 M 0429 944 683
E coranning@westnet.com.au

Red Poll Life Members

R Draper (MRD RED CACTUS)

75 Running Creek Rd, Arthurs Creek VIC 3099
P 0428 510 252 M 0428 510 252
E redcactus@bigpond.com

J K Graham & Co. (KGW VIRANGRA)

Po Box 130 Ardrossan SA 5571
P 08 8837 3327 M 0438 373577
E vkrowntree@gmail.com

J H Williams & Co (J6H YONGERELLEN)

Po Box 100 Quairading WA 6383
P 08 9645 5220 M 0429 455 220 (txt only)
E yongerellen@activ8.net.au

R.M. Wilson & Son (RMW OAKWOOD)

Oakwood - Brentwood via Minlaton SA 5575
P 08 8853 4223 M 0428 434 534
E wilsonbeef@hotmail.com

ADVERTISING INDEX

Glen Leigh.....page 5
Glenwyn.....page 4
Koallah Park.....page 4
Kookabookra.....page 5
Lagoona.....page 4

Maleer.....page 21
Moyle Park.....page 6
Red Cactus.....back cover
Sophronites.....page 3
Stormley.....page 11

Turanga.....page 9
Wilson.....page 17
Woodburn.....page 11
Yongerellen.....page 20



REDcactus

BREEDING QUALITY CATTLE



ROSS DRAPER 0428 510 252

Email redcactus@bigpond.com www.redcactusredpoll.com