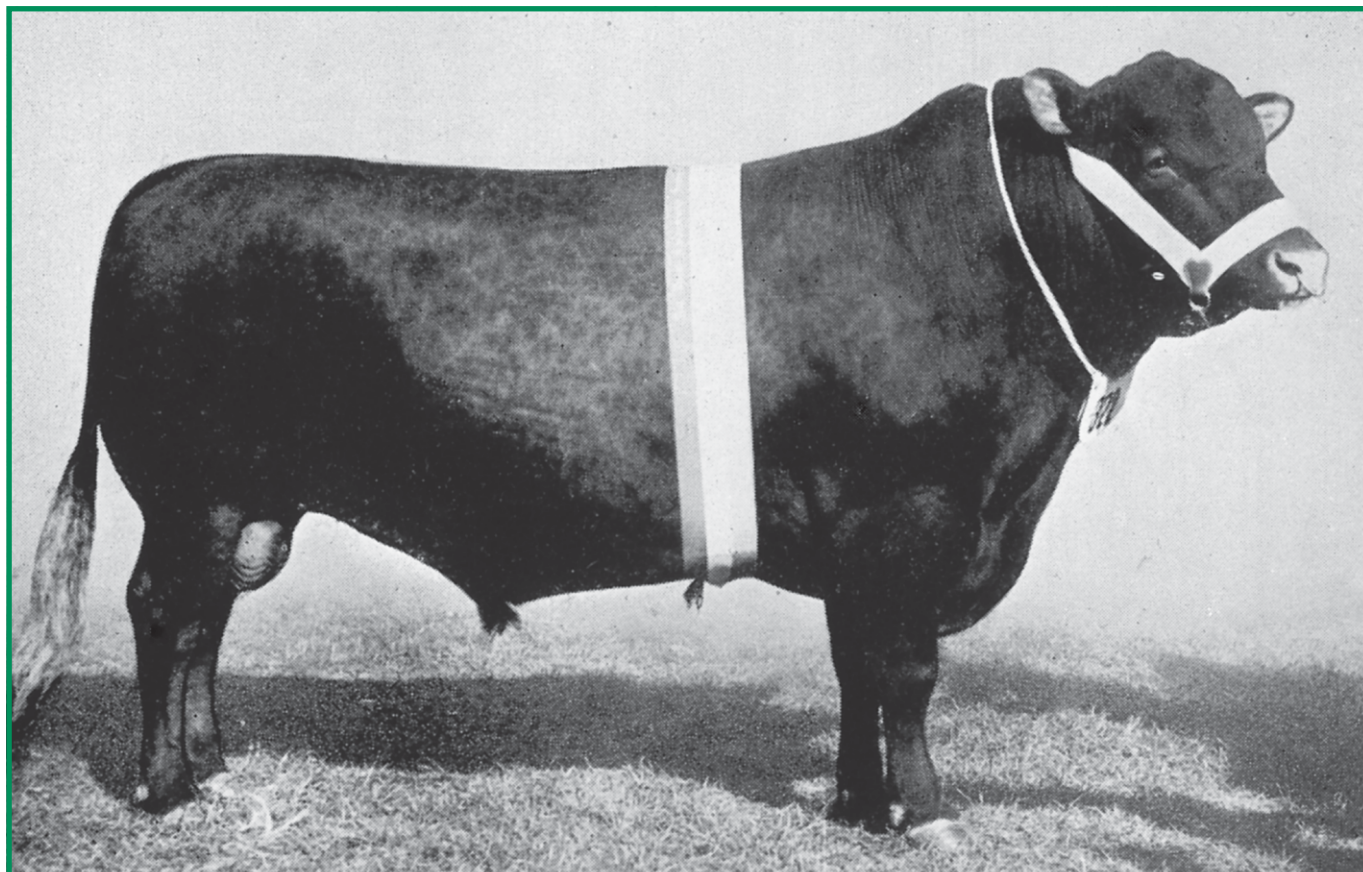


RED POLL

BEEF CATTLE

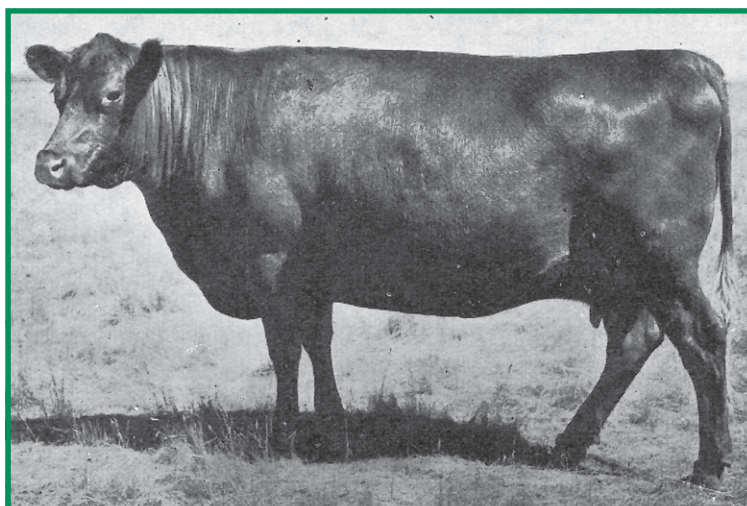
Celebrating 100 years - Woodburn Stud



WOODBURN THUNDERER
Champion R.A.S. of Victoria, 1946.

Red Poll
Annual
2022

www.redpoll.org.au



WOODBURN LORNA, by Edderton Ham out
of Northwood Lulu.

BRIGADIER HURST AWARD



**CONGRATULATIONS
OAKWOOD RED POLL STUD**

PARKER PERFORMANCE AWARD

The award was donated to the Red Poll Cattle Breeders Association of Australia by Mr and Mrs E Parker of South Africa to commemorate their visit to Australia in 1965.



This is presented annually to the most successful exhibitor at a nominated Royal Show within set classes and the championships.

Conditions apply before points can be gained and the Executive Officer calculates the award winner annually.

Not Awarded for 2020 due to COVID

National Executive 2022

PRESIDENT Tim Light (NSW/QLD)

'Lagoona' Armidale NSW 2350

M 0458 744 552 **E** double_fitting@yahoo.com.au

TREASURER Ross Draper (VIC)

75 Running Creek Road, Arthurs Creek VIC 3099

M 0428 510 252 **E** redcactus@bigpond.com

Gay Ward (Federal)

75 Running Creek Road, Arthurs Creek VIC 3099

M 0417 558 508 **E** honerv@gmail.com

Murray Williams (WA)

PO Box 100, Quairading WA 6383

P 08 9645 5220 **E** yongerellen@activ8.net

Alan Couch (NSW)

23 Adamson Crescent, Wanniasa ACT 2903

P 02 6231 5440 **M** 0400 187 260

E alan@couch.net.au

Peter Wilson (SA)

PO Box 251, Minlaton SA 5575

P 08 8853 4104 **M** 0408 534 071

E pcklwilson@hotmail.com

Kim Usher (Federal)

415 Boorolong Road, Armidale. NSW 2350

M 0408 073 427

E kim.usher@une.edu.au

ABRI CONTACTS

EXECUTIVE OFFICER AND BREEDPLAN

PROCESSING OFFICER Keryn Hutton

ABRI University of New England, Armidale NSW 2350

P 02 6773 3059 **F** 02 6772 5376

E red.poll@abri.une.edu.au

REGISTRAR Sharon Reynolds

P 02 6773 2327 **F** 02 6772 5376

E sharon.reynolds@abri.une.edu.au

TECHNICAL OFFICER Boyd Gudex

P 02 6773 1711 **E** boyd@sbts.une.edu.au

Red Poll Beef Annual - Official publication of: The Australian Red Poll Cattle Breeders Inc.

c/- Australian Business Research Institute (ABRI), University of New England, Armidale, NSW, 2351

Front cover image: Woodburn Stud.

Published and compiled by: ABRI and G Ward, with special thanks to Briony Looker, Jill Coghlan, Douglas Payne and family and Tim Light - for their significant contributions.

Graphic Design & Printing: NHP Printing.

DISCLAIMER: The contents of the 2022 Red Poll Annual are copyright and reproduction without permission of the publisher is forbidden. The views expressed by contributors and claims made by the advertisers are not necessarily endorsed by the editors and the Australian Red Poll Cattle Breeders Inc. Neither the editors nor the Australian Red Poll Cattle Breeders Inc. take any responsibility for the accuracy of the information contained within this magazine nor for the outcome of any action taken by readers or others based on the information contained therein.

President's Report

Well what a year we have all experienced through Australia, we have all battled through drought, bushfire and floods but like all Aussie farmers we are renowned for our resilience and due to this we all pulled through these hurdles and then the COVID19 pandemic hit. From March 2019 onwards nearly all our events and social gatherings were postponed or cancelled this tested us all again this time more personal than the previous struggles things were very tough for us all, thankfully we found Zoom (both a blessing and a curse) but through technology we were able to stay in contact and still meet to discuss and what needed discussing.

One thing that has helped us all continue to push through is the strong demand for Red Poll cattle to top it off the price we are receiving for our stock is at an all-time high, prices we never thought could be possible.

I would like to commend and congratulate the Wilson family from Oakwood, South Australia on the quality line of cattle offered through AuctionsPlus and for such great prices received. Another sale highlight I would like to mention is that of the Abbott family's top priced steer calves through the Warrnambool saleyards earlier this year. Congratulations!

More recently the Perth Royal Show was able to be held under COVID rules but this year there were 3 exhibiting studs with a total of 6 head being shown. Congratulations to all exhibitors!

Moving on to the progeny testing group, they have been working hard looking into Genomics testing. I am sure we all look forward to hearing the results of this hard work as developments come to hand.

Unfortunately the 2021 National Red Poll Youth Camp was unable to run for a second year but I know the Youth Camp Committee are keen for the 2022 camp and to get back educating the next generation of cattle breeders. Staying local up here in the NSW/QLD region we were able to run the 2021 on-farm challenge with an outstanding array of Red Poll and Red Poll cross cattle presented for judging.



In May we were able to get to Rockhampton BEEF Week and then onto FarmFest in Toowoomba.

In closing I would like to acknowledge my hard working National Executive committee for their time and effort to the Red Poll Breed and the ARPCBI. As we look forward to 2022 we all remain hopeful that things can continue to reopen and life can return to a new kind of 'normal' that we can get back the events, shows and field days filling up our calendars and allowing us to passionately promote our quality red poll cattle and showcasing our animals in the show ring while proudly standing out from the rest in our distinct breed uniform.


Stay safe, be kind to one another and remember that the National Executive is made up of members and breeders who are all volunteers and who selflessly donate their time to the Red Poll breed of which we all love.

Thankyou.


Tim Light
President

**KEEP UP TO DATE WITH
ANNOUNCEMENTS, EVENTS AND
RESULTS VIA OUR FACEBOOK PAGE -
SCAN THE QR CODE BELOW TO FIND OUT
MORE!**

SCAN ME



**RED POLL
BEEF CATTLE**



CARLIE MACKELMANN
GLENWYN RED POLL STUD

 84 Sargoods Road, Gooram VIC 3666
Email: carlie.mackelmann@gmail.com
Mobile: 0447 772 142

Steer Competition Results 2021

UPPER HUNTER BEEF BONANZA



Image: Lagoon One & Only.

A huge congratulations to TD Light & BA Looker - Lagoon Red Poll Stud for gaining 5th place in Class 3 - Middleweights at the Upper Hunter Beef Bonanza

Their purebred Red Poll steer scored 84.24 total points. The steer had perfect measurements of 7 & 7mm for Rib & Rump fat and yielded a whopping 58.32%, and he MSA graded 61.25.

The Hancock Family of Kookabookra Red Poll Stud also exhibited a steer at the Upper Hunter Beef Bonanza in Class 1 - Middleweights. Their steer hung up well with an MSA index of 64.25 and Yielded 53.53% but unfortunately missed out on any placings.

**T
O
G
E
T
H
E
R
A
H
E
A
D**



USE
Yongerellen 
Home of the Grey Kangaroo
RED SANDS
Le Topaz
RUM RIVER
GENETICS

Contact	Murray	0429 455 220
	Quentin	0419 041 220
	Alex	0427 188 901
	Ollie	0497 193 497

STOCK FOR SALE

Whittlesea Agricultural Society & Whittlesea Show Irwin Stockfeeds Hoof & Hook Competition



**Sophronites Hornet: Class 1 – Hook – 3rd place,
Sired by Lynbarry Phantom.**



**Sophronites Saturn: Class 2 – Hook – 4th place,
Sired by Lynbarry Phantom.**

There were a total of 46 head entered for the competition, which included 13 Purebred and 3 Red Poll Infused steers.

The competitors in this year's event were:

- IA & NF Staff - 'Sophronites'
- 5 Purebred R.P Steers
- BE & LE Johnson - 'Lynbarry'
- 3 Purebred R.P Steers
- R Draper - 'Red Cactus'
- 3 Purebred R.P steers
- DN Payne - 'Woodburn'
- 2 Purebred R.P Steers
- D Johnson
- 1 R.P X Angus Steer
- A & J Munro
- 2 R.P X Hereford Steers

Hoof Results:

- **Class 1 - BE & LE Johnson:**
Purebred Red Poll Steer - 4th place
- **Class 2 - Daryl Johnson:** Red Poll X Angus Steer
- 1st place & Reserve Champion on the Hoof.

Hook Results:

- **Class 1 – I & N Staff:** Purebred Red Poll Steer
– 3rd Place
- **Class 2 – I & N Staff:** Purebred Red Poll Steer –
4th Place – with only .24 points between
4th and 1st Place !

Wingham Beef Week Carcase Competition

Congratulations to Ian and Jill Coghlan of Eurimbla Red Poll Stud whose 14 month old Red Poll x Shorthorn steer took out 3rd place in Class 6 with a score of 91.34 points.

Some key scoring aspects for this steer were his hot carcase weight of 309kgs, 20/20 for Market Specifications, EMA of 91 sq cm, Yield 59 % and MSA index 64.85.

A great result in a class that had a total of 28 entries.

Steer Competition Results 2021

Swan Hill Show Hoof and Hook Competition



Black Steer: Shane Storm.



Red Steer: Trent Storm & Lacey Kelleher.

The competition was held on 9th October 2021, this year's event saw 35 head in total.

Congratulations to Shane Storm, Trent Storm and Lacey Kelleher on their wins in the competition with their Red Poll x Angus Steers.

Shane's steer had the 3rd highest score of the competition with 87.62 points.

Congratulations Shane, Trent and Lacey!

2021 Royal Adelaide Show Carcase Competition



Congratulations to R M Wilson & Son who claimed the title of Teys Australia Reserve Champion Heavy Domestic Carcase with a Purebred Red Poll steer at the recent Adelaide Royal Show!

This year's competition saw 115 head compete so competition was strong!

Their Purebred Red Poll steer had a 95cm EMA and scored an overall Carcase score of 89.09! This steer was 1 of only 4 head that scored 20/20 points for EMA.

Congratulations Alan & Peter!

Congratulations to all Red Poll Exhibitors on their terrific Hoof & Hook results.

Article prepared by: Briony Looker

SOPHRONITES RED POLLS



FOR Semen Sales of our CHAMPION BULLS

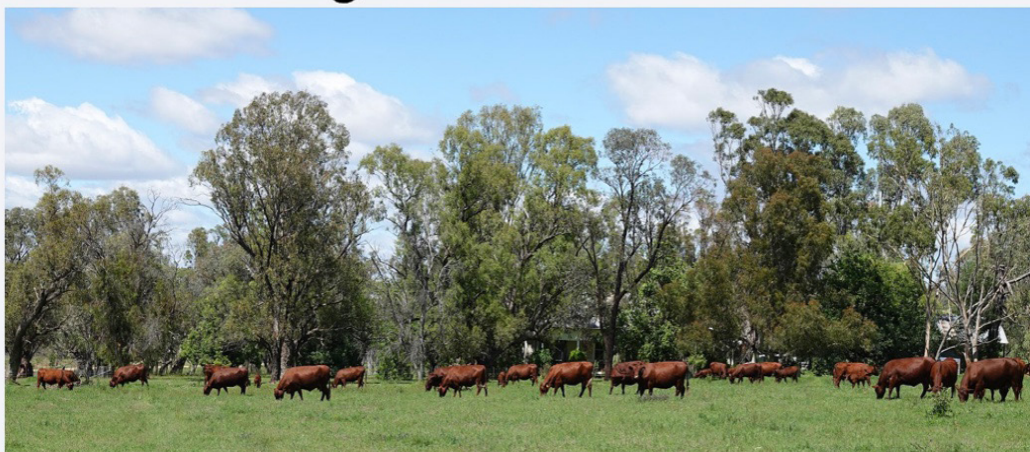
Nell & Ian Staff

Email: ianstaff@techinfo.com.au

Mobile: 0411 314 501

Website: sophronitesredpoll.com

Omega 3 Red Polls



- The Brand : High Performance, feed efficient, docile.
- All calves weighed at birth, tested for myostatin & structural soundness.

Nick & Prue Lee . 0429990388

abbottlelee@bigpond.com

"Bindaree", 51 Claremont Rd, QUIRINDI N.S.W.

www.omega3redpolls.com.au



Follow their calves

Beefing Up QLD

My wife Lyn and I were originally North Queenslanders, running Droughtmaster cattle on our property at Owens Creek near Mackay. We moved to Mt Sturt near Warwick about 10 years ago and initially bred Brangus here, looking for big framed cattle with reasonable meat quality and resale value. However, once drought hit the area, we found they did not do as well as we had hoped and began to drop condition under stress. In the first few months of the drought, we changed out our herd of Brangus breeders with Droughtmaster Heifer weaners - as it was a breed that we were already familiar with. We made the decision to wait the drought out, hard feed and hold off breeding until conditions improved. The decision, though hard, gave us some breathing room to develop a good commercial herd of cows with specific characteristics we were looking for.

Seeing we had some time up our sleeves, we looked at long term goals for future breeding:

- *improving the marketability of our cattle to a wider Queensland market including up North to ticky areas*
- *a higher MSA Rating and meat quality. A better fat score and tenderness in the beef than what we were achieving in our Droughtmasters.*

Improving on these attributes:

- *easy calving*
- *do-ability in harsher conditions*
- *hybrid vigour in offspring*
- *Quiet, easy to handle cattle with good temperament and low stressability*
- *Eye appeal- sound and correct structure. Big frame, length through the back and good muscle development around the shoulders and hind. Sound confirmation through the feet and legs that would be suitable for hilly and sometimes rough country*

Areas affected by ticks in the North means buyers are reluctant to buy southern cattle much past Toowoomba. and Droughtmasters have resistance and are tougher, but scored lower MSA ratings than their English cousins. The English cattle may have superior quality meat, but have no tick resistance, and often to not do as well in harsher country of Western and Northern QLD.

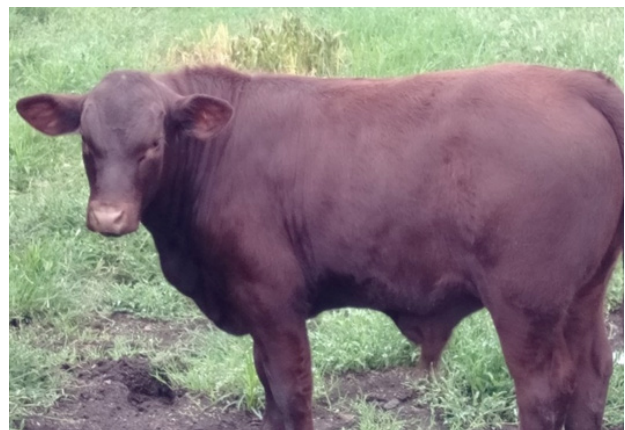
During our research we found that there possibly wasn't a single breed of cattle that would achieve our aims. It was like clicking together parts of a jigsaw to get the right fit. We were looking for both Bos Indicus and Bos Taurus characteristics, hoping to soften our cows with the introduction of a more English style of bull- but what type remained a mystery. We started looking away from more common breeds (Angus, Herefords) and at some of the less common breeds- (Bazadais, Belmonts, Charolais, Senopol) and found that Red Poll clearly ticked the most boxes for the traits we were looking for. We love the Red Poll breed and think it is a breed that has the most to offer.

We then extended our cow herd with some different breeds to cross over with Red Poll to see what would give us the best fit - selecting breeds with different percentages of both Taurus and Indicus - British White, Devon x Droughtmaster and they became additions to our herd of Droughty girls. Purebred Red Poll cows were used as a control to see what the difference was between pure and crossed cattle. For the Southern market we are trialling Red Poll x British Whites X and Pure Red Polls, for the Northern Market Red Poll x Droughtmasters.

These were our observations of the characteristics of the different breeds of cows we selected, and how they did on our property during drought conditions.



Lagoona Impact – Red Poll Bull with #76 Red Poll x Droughtmaster x Devon x Limo (1st – Cross Breed Bull #76. Qld/Northern NSW Red Poll On Farm Challenge, May 2021).



Red Poll x Droughtmaster Calf at 3 months old.

CHARACTERISTICS	Nature	Copes with harder conditions	Tick Resistance	Meat MSA Scores	Conformation	Gains (on grain/ hay) during drought	Ease of Calving following drought
Droughtmaster	Easy going, quiet in yards & paddock.	Travels for feed and water, keeps condition, adapt to change.	Yes	Hump lowers MSA score. low stress indicators.	Good strong frame and height, strong legs, sound feet, long backs, deep chested.	1.3 - 1.8 per day from 6 months	Small calves that grow quickly. Moderate milk supply. No losses.
British White	Mostly quiet can be a little reluctant.	Travels for feed and water, keeps condition, adapt to change.	No	No MSA scores (purchased and kept).	Good frame, can be narrow hipped. Finer legs sound feet, long backs. Moderate chest depth.	1.3 - 1.5 per day from 6 months	Small calves, good milk supply, grow moderately fast. 1 loss.
Droughtmaster x Devon x Limbo	Easy	Travels for feed and water, keeps condition, adapt to change.	Some	Good MSA scores, low stress indication,	Solid legs and sound feet, smaller in height than other breeds, deep chest and long backs.	1.3 - 1.5 per day from 6 months	Small calves, moderate milk supply, grow moderately. 1 loss.
Purebred Red Poll	Mostly quiet. Solitary.	Travels for feed and water, keeps condition, adapt to change.	No	No MSA scores (purchased and kept). Good muscle definition.	Good strong frame, strong legs, sound feet, long backs deep chested.	Purchased as adults.	Small calves, good milk supply, grow moderately fast.

Calving results for the first season following drought. These were our observations after crossing each of these breeds with our Red Poll Bull. Birth weights and gains to be measured in the next calvings.

CHARACTERISTICS	Nature	Copes with harder conditions	Tick Resistance	Conformation/ meat attributes	Size and weight gains (grass and grain fed)	Growth rates
Droughtmaster x Red Poll <i>(1st - Cross Bred Female 2nd - Cross Bred Bull #82 QLD/Northern NSW Red Poll On Farm Challenge, May 2021)</i> <i>(Champion Commercial Exhibit Red x Droughtmaster Heifer QLD/Northern NSW Red Poll On Farm Challenge, May 2021)</i>	Easy going calves, quiet in yards & paddock.	Travels for feed, keeps condition, adapt to change.	Yes	Improvements in conformation which is softened through the use of Red Poll. Big framed calves and evidence of hybrid vigour. No hump. Better hind and chest muscle definition. Softer rounder frame.		Born small and grow quickly.
British White x Red Poll	Quiet calves.	Travels for feed, keeps condition, adapt to change.	No	Improvements in conformation (more solid), long backs. Moderate chest depth. Pretty - speckled makes them popular in the saleyards as a Red Poll cross calf.		Born small and grow moderately.
Droughtmaster x Devon x Limbo x Red Poll <i>(1st - Cross Breed Bull #76. QLD/Northern NSW Red Poll On Farm Challenge, May 2021)</i>	Quiet calves.	Travels for feed, keeps condition, adapt to change.	Some	Solid legs and sound feet, smaller in height than other breeds, deep chest and long backs.		Born small and grow quickly.

It's early days. Now that we have done the initial work and the first "Red Master" calves are on the ground, it's time to gather some weights and MSA data to confirm or deny whether we are on the right track. But initial findings are certainly interesting as you can see by the photographs.

Our first drop of heifer weaners from each of our sample breeds have been sold as breeders and next years are also pre-sold. Also, one of our Red Poll x Droughtmaster was also sold for breeding.

Tony Duncan - Sky View Pastoral. Mt Sturt QLD.

Celebrating 100 years

This year marks the centenary of the Red Poll Cattle Breeders' Association of Australasia Herd Book. This first Herd Book included all states of Australia, New Zealand and New Guinea and detailed the foundation members and Red Poll herds. The inaugural Patrons of the Association were the Governor of Victoria, The Right Hon. The Earl of Stradbroke and Major Phillip Charley, Belmont Park, Richmond NSW and President was Dr S.S. Cameron, Director of Agriculture, Victoria. The Central Development Farm in New Zealand and the Chief Veterinary Officer of Victoria W.A.N. Robertson were members along with many leading farmers including Heaton Rhodes and the Hon. T.H. Payne of Woodburn, Kilmore Victoria who was Vice President. Over the next few years, many agricultural colleges, agricultural holdings and Victorian & NSW Government herds would join to make Red Polls a leading breed in Australia.

It was a time of great optimism for the agricultural industry in Australasia. Red Poll records show prolific numbers of cattle imported from America, England and New Zealand to form the very best breeding herds. Complementary to this was the genetics and data collected for milk and butter fat, meat yields and longevity that placed Red Polls as leaders in the cattle industry because they produced the best milking quality and the best meat qualities.

The Woodburn Red Poll herd was integral in this rich history and is now the oldest Red Poll herd in Australia. The history of the Woodburn Red Poll herd is a wonderful story founded on the original bloodlines imported from England. Over the past 100 years Woodburn bloodlines have been a major influence on Red Poll studs including Larkhill and so much so, that many Red Poll studs in Australia can now trace Woodburn genetics in their herds. Hugh McIntosh of Burnwood and Ken Baxter of Cloverlea were both Managers of the Woodburn stud at different times and were well aware of the tremendous value of the Woodburn herd, so it was only natural they should select their foundation herds from Woodburn bloodlines.

The Hon. T.H. Payne MLC established the Woodburn herd in 1917 with the purchase of a bull from the Victorian State Research Farm, followed by 3 females from Sir R. Heaton Rhodes in N.Z. In 1920 Mr Payne imported Hatton Gerald from England along with 2 females, Plumstead Permain and Plumstead Pip. In 1923 Mr Payne imported a further bull and six heifers and in 1927 he imported Whiteway Wiseman and 2 heifers, Whiteway Wildberry and Whiteway Wilful. Whiteway Wiseman was particularly noted for improving type, udders and production. Mr Payne was a highly regarded cattleman and his commitment and progressiveness was apparent in 1931 when he became the first Australian to purchase cattle from England by telephone (sight unseen). The bull, Gresham Mohawk was accompanied by noted Marsden females; Marsden Mimulus, Marsden Marvel and Marsden Mindful. Mr Payne valued the maternal qualities that the Marsden females provided. The Woodburn females were all measured for milk and butterfat as Mr Payne recognised this was the key to producing top steers. Woodburn won many steer competitions against all breeds at the time.

The Australian Red Poll Breeders Guide published in 1949 describes the value of Woodburn importations as "No history of Red Polls in Australia would be complete without reference to the great animals imported by the late Hon. T.H. Payne MLC." "The influence of the blood was a tremendous factor in developing many of the great herds in Australia". Woodburn steers were highly successful in steer competitions which was attributed to "the wealth of evidence which could be produced as to the milk and butterfat production of the stock from which the steers were bred". Proof of this was in 1927 when Woodburn steers, Lionel, Ghurka and Lofty at 20 months were awarded 1st, 2nd & 3rd for carcase at Royal Melbourne Show. Live weights (kg's) were Lionel: 561.5kg, Ghurka: 663kg and Lofty: 511kg. Unfortunately, Ghurka was disqualified because his weight was so good, he exceeded the demands of overseas beef importers.

At the time of his death in 1932 the Hon. T.H. Payne MLC, was President of the Red Poll Cattle Breeders' Association of Australasia. This was a huge blow to the breed and a large part of the Woodburn stud had to be dispersed in 1933 when fourteen animals went into the foundation of Burnwood (Woodburn backwards) and 100 head were sold to the Bundure stud, owned by the New Zealand & Australian Land Company located at Jerilderie in western NSW. Fortunately, Mr T.E.N. Payne was as committed to the breed as his father and set about rebuilding the Woodburn stud in 1934. He purchased heifers from Patterson Bros., of Bessboro that had Woodburn bloodlines traceable on both sides. More females and bulls were purchased from the Northwood Park and High Camp studs. Mr T.E.N. Payne continued to base his selection on milk and butterfat. This was evident with the purchase of Bradwell Rosewell, that he imported in 1948 to be top sire at Woodburn. Bradwell Rosewell's dam was Bradwell Rose Marie, winning Red Poll cow of the 1947 London Dairy Show. A full brother of this bull sold in England in 1949 for the world record for a Red Poll of 1600 guineas or \$47,161 in Australian dollars at today's value.

By 1949, the Woodburn stud had won 43 championships, 20 reserve championships, 134 first prizes, 75 second prizes and 38 third awards. Woodburn's testing of cows and steers was also well recognised.

Since the late 1960's the Woodburn Red Poll herd has been managed by Douglas Payne and family. Douglas has kindly made the following comments:

- Woodburn's Legacy

Until the late 60's the milking of about 24 cows along with testing for butterfat was the principal basis for selection and breeding. Some cows that were culled on that basis were purchased at Newmarket by our good herdsman Ken Baxter and became the basis for the quality Cloverlea stud. In that environment Woodburn produced some prize-winning steers, and one carcass was sent for display at Smithfield (England) as I recall.

If the recording of butterfat caused an over-reliance on milking traits during the Dual Purpose Era it is equally true that an overemphasis on muscling resulted in some excesses after the change. The true Red Poll produces top carcasses while retaining the ability to raise calves in all conditions.

My father became a great friend of Brigadier Hurst and there is a big file of their written exchanges. Surplus Red Poll breeding stock were sent to Larkhill where they thrived in the warmer climate and achieved great results with the Brigadier's very skilled stud work. This included an element of line breeding and some successful bulls came down to Woodburn. The other destination for breeders was Dr Stephens between Toowoomba and Dalby.

Woodburn has been sustained with good bulls from the Coghlan family, Ross Draper, Ian Staff, Ken Baxter and others.


Red Polls have shown how they cope in this climate and in recent years, droughts, not to mention the effect of fires. They will milk themselves into the ground if allowed and continue breeding to a very mature age. I have found it hard to get good value in store sales but if presented for sale in a properly finished condition especially as bullocks they are a match for anything. My last draft was described as outstanding. Now, in news just to hand, Woodburn sold bullocks at Pakenham VLE on 29th November, averaging 682 kg for 456.6c/kg.

IN THEIR 60th YEAR
WOODBURN
RED POLLS

Complete a hat trick with their third successive Grand Champion Bull

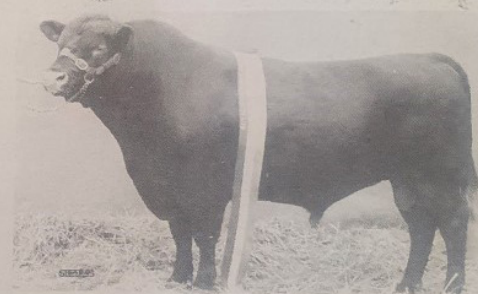
1976

Woodburn Escort
Calved 5-7-73
Sire: Lakhill Substantive
Dam: Woodburn Lady Elma 4th




1977

Woodburn Esperence
Calved 12-8-74
Sire: Woodburn Eupeptic
Dam: Woodburn Lady Elma.



1978

Woodburn Fandango
Calved 24-8-75.
Sire: Woodburn Eupeptic
Dam: Woodburn Favouritism.



**TOP QUALITY BULLS OF
SIMILAR BREEDING
ARE AVAILABLE**

Inquiries to D.N. PAYNE, Woodburn, KILMORE 3601. Tel: (057) 82 1002

40

Red Poll Newsletter - February 1979

Woodburn continued their success in the showring during the 70's. Doug commented that "I used to strap the bulls in the way I learned to strap horses in the UK and had the luck to win championships".

The Red Poll breed is privileged to have the Woodburn herd as part of its history because its bloodlines gave such a very strong backbone for our breed. The Payne family have had a wonderful faith and commitment to the Red Poll breed that has endured for more than a century and will grace our landscape for many years to come. Thank you Douglas, Catherine and your family.

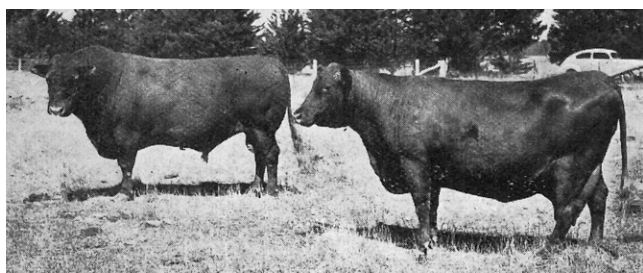
Continued Page 12

HISTORIC WOODBURN RED POLL STUD

Remarkable Influence Exerted on Progress of Breed for 30 Years by Kilmore Herd

IF it is claimed that the famous Belmont Park herd of MAJOR PHILIP CHARLEY, of Richmond, NSW, exerted a greater influence on development of Red Polls in Australia during the first 30 years of stud breeding than any other stud, then it can be asserted with equal justification that no stud has contributed more to progress of the breed during the last 30 years than Woodburn.

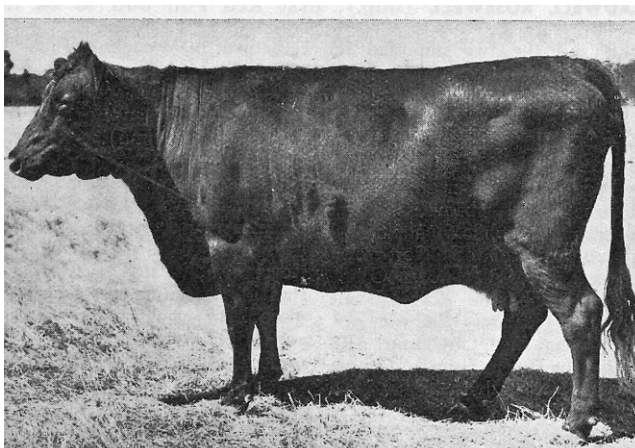
MAJOR PHILIP CHARLEY founded his great Belmont herd in 1891 by importing two bulls and nine females from England. He strengthened his great stud from time to time until 1915 by importing some of the best bulls obtainable in England. When material for Volume 1 of the Australian Herd Book closed in 1921, the Belmont herd ran to 112 bulls and 249 females, including all young stock. Every beast had an unbroken pedigree through imported sires and dams recorded in the British Herd Book.



BOTH 1946 MELBOURNE ROYAL CHAMPIONS: Recent paddock study of Woodburn Thunderer and Woodburn Graceful in Woodburn Red Poll stud of MR T. E. N. PAYNE, of Kilmore, Victoria. Thunderer was by Abbeycombe Knight (imp.) and out of Woodburn Ena, while Graceful was by Woodburn Monitor and out of Northwood Gracious.



HON. T. H. PAYNE, "Woodburn," Kilmore, Victoria, elected President of the Red Poll Cattle Breeders' Association of Australasia in 1930.



Woodburn Flippant 2nd

Founding of Woodburn Herd

Woodburn took over just about where Belmont Park left off.

This renowned herd of Red Polls was founded in 1917 by the late Hon T. H. PAYNE on his Woodburn property, which is situated three miles from Kilmore, and about 40 miles north-east of Melbourne.

The start was perhaps inauspicious, consisting of a bull bred in the Victoria herd of the Department of Agriculture, and three females obtained from SIR R. HEATON RHODES, of Tai Tapu, Canterbury, NZ. These animals did not carry the AA classification reserved for stock of unblemished purity of breeding.

So, with the creation of an Australian herd book in the offing, the late MR PAYNE decided very early to dispense with these animals and their progeny and make an entirely fresh start with AA animals only.

Notable Importations

Accordingly, in 1919, he obtained the bull Astronomy and the four cows, Chance, Gratis, Telma, and Trixy, from MAJOR CHARLEY. Meanwhile, he had made arrangements to import the first of the many notable animals which he brought from England. The initial shipment in 1920 consisted of the bull, Hatton Gerald, and the heifers, Plumstead Pip and Plumstead Permain.

These animals were followed in 1923 by the bull, Eastern Liberator (imp) and the six heifers, Dallinghoo Fairy 4th (imp), Knepp Meadow Dell (imp), Knepp Prudence 3rd (imp), Necton Effigy (imp), Henham Dorcus (imp), and Manor Tiarella (imp).

Great Producers of Breed

There were remarkable producers among these heifers. Perhaps the most notable was Henham Dorcus, which yielded more than 600lb butterfat at nine and 10 years. This cow was also dam of Woodburn Lionel, one of the pair of steers which was disqualified at Melbourne Royal in 1927 for being "too good." Lionel, with a live weight of 1,238lb and a dead weight of 792lb at 20 months, gained 97 points out of the maximum of 100.



LAGOONA RED POLL STUD

About Lagoona

Lagoona Red Poll Stud is based in the heart of the New England at Armidale Northern NSW where Red Polls are making a difference.

- Gentle Disposition
- Naturally Polled
- Eye & Udder Pigmentation
- Fertility & Mothering Ability
- Cross Breeding Performance



Lagoona Red Poll Stud: Tim Light – 0458 744 552
BREEDING THE CHAMPIONS

SHOW CHAMPIONS 2021

Sydney Royal



Photo: Red Rush Prince Louis.

JUNIOR CHAMPION FEMALE	R.Draper - Red Cactus Joclyn
RESERVE JUNIOR CHAMPION FEMALE	K.Usher - Red Rush Crackling Rosie
SENIOR CHAMPION FEMALE	R. Draper - Red Cactus Teah
RESERVE SENIOR CHAMPION FEMALE	K.Usher - Eurimbla Still Raining
GRAND CHAMPION FEMALE	R.Draper - Red Cactus Teah
JUNIOR CHAMPION BULL	K.Usher - Red Rush Prince Louis
RESERVE JUNIOR CHAMPION BULL	K.Usher - Red Rush Prince George
SENIOR CHAMPION BULL	R.Draper - Red Cactus Mac
RESERVE SENIOR CHAMPION BULL	Hancock Group - Kookabookra Granite
GRAND CHAMPION BULL	K.Usher - Red Rush Prince Louis
BEST EXHIBIT	K.Usher - Red Rush Prince Louis

Perth Royal



Photo: Red Sands Valentine.

JUNIOR CHAMPION FEMALE	O. McLeary - Rum River Remi
SENIOR CHAMPION FEMALE	Q & S Hooper - Red Sands Valentine
RESERVE SENIOR CHAMPION FEMALE	J H Williams & Co - Yongerellen Esma Lantern
GRAND CHAMPION FEMALE	Q & S Hooper - Red Sands Valentine
SENIOR CHAMPION BULL	O. McLeary - Rum River Quimby
GRAND CHAMPION BULL	O. McLeary - Rum River Quimby
SUPREME CHAMPION	Q & S Hooper - Red Sands Valentine



OAKWOOD RED POLLS



BEEF PRODUCTION AT ITS BEST

2020 GRASSFED CARCASE COMPETITION, TEYS, NARACOORTE

STEER: V-28 - 1ST (104 entries) 180-260kg. DW.

STEER: V-69 - 1ST (787 entries) 260.1-340kg. DW.

Both entries sire by Oakwood Beef BBQ (who also sired the 2021 Royal Adelaide Show Reserve Champion Domestic Carcase).



Pictured are the foundation cows and calves purchased in 2021 by Simon Vale of the Mt. Marshall Stud, Queensland.

CONGRATULATIONS AND EVERY SUCCESS FOR THE FUTURE

**THANKYOU TO ALL PURCHASERS OF
OAKWOOD GENETICS IN 2021**

WILSONS' RED POLL CATTLE

CONSISTENT • PRODUCTIVE • PREDICTABLE



Alan and Marilyn Wilson
Brentwood via Minlaton SA 5575
Email wilsonbeef@hotmail.com
Phone 0428 434 534

Peter and Kristen Wilson
PO Box 251 Minlaton SA 5575
Email pcklwilson@hotmail.com
Phone 0408 534 071

The Value of Breed Diversity

Red Polls: Supporting Breed Diversity

By **Catie Gressier***

Over the past century, the goal of animal husbandry has shifted from use value to increasing performance for economic gain. Cattle have been divided into dairy or beef breeds and are selectively bred for milk volume, or rapid growth and muscling, respectively. Production increases have been extraordinary, yet have come at a considerable cost.

The livestock industry's favouring of a diminishing number of high-yielding commercial breeds has resulted in the extinction of at least 184 cattle breeds globally. In Australia, eight cattle breeds are now extinct, with another 38 listed as under varying levels of threat by the Rare Breeds Trust of Australia (RBTA).

This echoes a broader pattern of loss of our agricultural biodiversity, which poses a serious threat to food security. The shift to corporate ownership of certain seeds, breeds and bloodlines has resulted in the homogenisation of our diets globally. As Dan Saladino writes:

the source of much of the world's food – seeds – is mostly in the control of just four corporations; half of all the world's cheeses are produced with bacteria or enzymes manufactured by a single company; one in four beers drunk around the world is the product of one brewer; from the US to China, most global pork production is based around the genetics of a single breed of pig; and, perhaps most famously, although there are more than 1,500 different varieties of banana, global trade is dominated by just one, the Cavendish.

Alongside this loss of variety within our fruit and veg, crops and breeds, artificial insemination (AI) technology has resulted in a vast reduction of bloodlines within livestock breeds. This is evident in Holstein-Friesians, whose high milk yields have seen

their popularity soar. In the US, over 90% of dairy cattle are Holsteins. In their research into male Holstein lines, researchers at Pennsylvania State University found that almost all AI Holstein bulls worldwide traced their lineage to one of two bulls born in the 1880s. Their lineages extend to two AI bulls born in 1960, from whom 99.84 percent of North American Holstein bulls are today descended. In terms of genetic diversity, these nine million cows are thus estimated to be equivalent to a herd of fewer than a hundred animals.

With the cattle industry thriving, some might wonder whether this loss of breed and bloodline diversity matters. Given the speed of climatic and social change we currently face, I think allowing this loss of diversity constitutes an enormous gamble. Scientists have long understood that risk is mitigated by ensuring diversity at the genetic, species and ecosystem levels. And with cattle, the cracks are already beginning to show. The global dissemination of lucrative bloodlines has resulted in the spread of genetic defects, such as the case of Arthrogryposis Multiplex (AM) and Neuropathic Hydrocephaly (NH) in Angus cattle. Among Holsteins, the intensity of selection for milk volume has compromised other traits resulting in metabolic and structural problems, increased production disease prevalence, and reduced fertility and longevity in the breed. Moreover, Holsteins high milk outputs require high feed inputs—including consumption of grain that could be consumed by humans—increasing negative ecological impacts.

On a big picture level, there are serious disease risks posed by a lack of biodiversity, especially when compounded by intensive animal confinement, where zoonotic diseases have ripe grounds for catastrophic outbreaks. Rob Wallace, an evolutionary biologist emphasises the need for 'immunological firebreaks'

Breeding for Excellence



EMA 787: A young five month old bull calf



A group of weaned heifers



Turanga Curly Wurly

GREG ABBOTT

287 Kolora Lane, Kolora VIC 3265

mob 0438 922 313

email gk.abbott@bigpond.com

RED POLL

BEEF CATTLE

Turanga
RED POLL STUD Est. 1985

against disease pandemics. Such firebreaks emerge from a diverse gene pool and are embodied in certain breeds for certain pests and diseases.

Conserving breed and bloodline diversity not only mitigates against disease risks, but also ensures the perpetuation of a wide array of traits to meet the needs of future populations. Consumer preferences are always changing, as seen in the fixation of recent decades on lean meat and milk, which is now beginning to wane. It's difficult to predict what trends will emerge in future, so conserving breed diversity keeps our options open. And, of course, breeds form a valuable part of our cultural heritage, with many of the old breeds who are currently at risk being docile, hardy, beautiful animals that have unique qualities and quirks that make them a pleasure to have around.

When I learned back in 2017 about the extinction crisis unfolding on our farms, I was shocked that more people weren't talking about it. I designed a project to examine these issues and, in 2020, was awarded Australian Research Council funding for myself and two PhD students to spend three years working with the rare and heritage breed farmers conserving breed diversity across Australia. We're halfway through now,

and within this rather dystopian story of extinction and loss, Red Polls have stood out as a heartening story of persistence.

Among the earliest recorded Red Poll cattle in Australia were the herd belonging to the Reverend Samuel Marsden in 1808. As a hardy, dual-purpose breed providing milk with high butterfat content and quality beef with good marbling, they became for a time among the most popular breeds. Yet, Red Poll numbers dropped dramatically alongside the trend for high-yielding commercial breeds, and Red Polls have been listed as at risk on the RBTA register for many years. Yet, through the work of passionate breeders, and the advocacy of the association, Red Poll numbers have stabilised somewhat, and the breed is now listed as recovering with the RBTA. While numbers are not high enough for complacency, the recent growth in small-scale and hobby farming has seen more moderately framed, dual-purpose cattle breeds, such as Red Polls and Dexters, attract renewed attention, which hopefully signals a bright future for this beautiful breed.

*Dr Catie Gressier is a Research Fellow at the University of Western Australia, and a Director of the Rare Breeds Trust of Australia.

Beef Australia Rockhampton 2021

Calf Champion Female	Lagoona Miss Naughty and Nice
Reserve Calf Champion Female	Lagoona Olive
Senior Champion Male	Kookabookra Granite
Reserve Senior Champion Male	Kookabookra Cobalt
Grand Champion Female	Lagoona Miss Naughty and Nice
Calf Champion Male	Omega 3 Sunil
Reserve Calf Champion Male	Lagoona Equilibrium
Grand Champion Male	Omega 3 Sunil



Beef Rockhampton 2021 - Judge - Grame Hopf : Associate Judge and Stud Principal Lilvale Red Poll Stud - Lilleah Newberry.

Red Rush Red Poll Stud

Kim and Nathan Usher
Armidale - 0408 073 427

The Red Rush stud took out the following at the 2021 Sydney Royal (the only Royal held in 2021):

- Supreme exhibit with Red Rush Prince Louis (also Junior Bull and Champion Bull)
- Best pair of Bulls
- Sires progeny
- Most successful Red Poll exhibitor
- Best maintained stud over 4 animals



ACT/NSW Membership Directory

M J Bassula

Tumbarumba 2653 NSW
P: 0427 482 289
E: redphoenixone@bigpond.com

Bellingen High School

Bellingen 2454 NSW
P: 02 6655 1315
E: bellingen-h.school@det.nsw.edu.au

Bowraville Central School

Bowraville 2449 NSW
P: 0450 957 883
E: bowraville-c.school@det.nsw.edu.au

Stephen Boyd

Bellingen 2454 NSW
P: 0421 761 675
E: kiniagman1@gmail.com

James & Barbara Caddy

Tamworth 2340 NSW
P: 02 67609177

Bede Clarke

Goonellabah 2480 NSW
P: 02 6624 1268

I A & J Coghlan

Gerogery 2642 NSW
P: 0412 650 050
E: eurimbla@Live.com.au

K H & K B Corbett

South Grafton 2460 NSW
P: 02 6642 6315

Alan & Cheryl Couch

Wanniassa 2903 ACT
P: 0407 019 200
E: alan@Couch.net.au

R E & F R Drysdale

Rollands Plains 2441 NSW
P: 02 6585 8022
E: willorn47@bigpond.com

Nick Faseas

Mulbring 2323 NSW
P: 0408 498233
E: nick@paragoncivil.com.au

BG Godfrey

Wherrol Flat 2429 NSW
P: 02 6550 7297

J A Halpin

Figtree 2525 NSW
P: 0412 332 640
E: jude.anne1@hotmail.com

Ian & Ruth Henderson

Cherrybrook 2126 NSW
P: 0417 682 257
E: avalonbinda@bigpond.com

T & G Hill

Culcairn 2660 NSW
P: 0429 042 979
E: eurunga18@gmail.com

G Mulcahy & A J Leicester

Wetherill Park 2164 NSW
P: 0418 417 899
E: garrick.mulcahy@bigpond.com

Model Farms High

Baulkham Hills 2153 NSW
P: 0404 437 264
E: modelfarms-h.school@det.nsw.edu.au

N & M Sorial

Baw Baw 2580 NSW
P: 0410 483 014
E: wongajong_farm@bigpond.com

Te Rumbel

Stroud 2425 NSW
P: 02 4994 5426

Letisha Salzke

Braidwood 2622 NSW
P: 0428 759 685
E: teash_13@hotmail.com

Tumbarumba High School

Tumbarumba 2653 NSW
P: 0431 218 608
E: eumbarumba-h.school@det.nsw.edu.au

RJ & SD Wilkinson

Bringelly 2556 NSW
P: 0413 581 098
E: rjwilko_bal@hotmail.com

Wooling Pastoral Company

Crookwell 2583 NSW
P: 0407 571 521
E: alexkc@Wooling.com.au

NNSW/QLD Membership Directory

B A & L T Beckham

Casino 2470 NNSW / QLD
P: 0409 032 218

R.G. Burness

Coolangatta 4225 NNSW / QLD
P: 0404 239 923
E: burness88@gmail.com

Eliza Cunningham

Armidale 2350 NNSW / QLD
P: 0499 221 528
E: freddie.74@live.com

RC & AC Dawes

Piggabeen 2486 NNSW / QLD
P: 0429 909 463

David J Dillon

Wollongbar 2477 NNSW / QLD
P: 0414 280 369
E: d.j.dillon@westnet.com.au

Tony & Lyn Duncan

Mount Sturt 4370 NNSW / QLD
P: 0427 691 210
E: skyviewpastoral@gmail.com

K Goulding & D Jensen

Lismore 2480 NNSW / QLD
P: 0488 536 923
E: gouldingjenson@gmail.com

AJ, RM & DJ Hancock

Glen Innes 2370 NNSW / QLD
P: 0432 581 493
E: hancock45@hotmail.com

Priscilla Hancock

Glen Innes 2370 NNSW / QLD
P: 0427 190 448

D & K Harrison

Mt. Larcom 4695 NNSW / QLD
P: 0488 527 662
E: gigoom@westnet.com.au

Leo Herzig

Clifton 4361 NNSW / QLD
P: 07 4697 3204

I & B Hutchinson

Peak Crossing 4306 NNSW / QLD
P: 0410 431 850
E: jindavick@bigpond.com

RA, VA, TD, BA & EL Light

Armidale 2350 NNSW / QLD
P: 0458 744 552
E: lagoona191@bigpond.com

Longley Red Poll Stud

Casino 2470 NNSW / QLD
P: 0427 675 104
E: accounts@richdairies.com

Nicholas & Prudence Lee

Quirindi 2343 NNSW / QLD
P: 0429 990 388
E: abbottlee@bigpond.com

J Mcclenaghan

Inverell 2360 NNSW / QLD
P: 0467 189 511
E: jessieworkmcc@gmail.com

Mt Marshall Red Poll Stud

North Toowoomba 4350 NNSW / QLD
P: 0402 563 909
E: svale10@gmail.com

PW Muller

Toowoomba 4350 NNSW / QLD
P: 0487 171835
E: peter.muller5@bigpond.com

B.K. & T.A. Munt

Wutul 4352 NNSW / QLD
P: 07 4692 6196
E: btasmmunt@skymesh.com.au

Lilleah Newberry

Glen Innes 2370 NNSW / QLD
P: 0438 324606
E: thewildnewberrys@activ8.net.au

R Angus North

Deep Creek 4570 NNSW / QLD
P: 0407 142 213
E: rangas6@bigpond.com

NNSW/QLD Membership Directory

Stephen Ost

Sandflat 2372 NNSW / QLD
P: 0490 143 441
E: glenapine1975@gmail.com

Owen & Anna Reinhardt

Brookfield 4069 NNSW / QLD
P: 0411 253 933
E: owen@peppervale.com.au

K & N Usher

Saumarez Ponds 2350 NNSW / QLD
P: 0408 073 427
E: kim.usher@une.edu.au

G.A. & J.J. Wehl

Toowoomba 4350 NNSW / QLD
P: 0428 717 178
E: jeanette.wehl@gmail.com

P.E, S.J, G.S Whibley

Pallamallawa 2399 NNSW / QLD
P: 0458 342 091
E: pariswhibley@gmail.com

S & K Williams

Greenmount 4359 NNSW / QLD
P: 0428 458 535
E: steve76kristie@gmail.com

SA Membership Directory

DR RWR & KL Daley

Jamestown 5491 SA
P: 0438 641 463
E: moylepark@ozemail.com.au

J K Graham & Co Life Member

Ardrossan 5571 SA
P: 0438 373 577
E: vkrowntree@gmail.com

C Hughes

Booleroo Centre 5482 SA
P: 0448 760 444
E: casskylie@gmail.com

DS & SJ Lines

Gawler 5118 SA
P: 0415 797 506
E: david@stockridge.com.au

Maleer Partners

Jamestown 5491 SA
P: 0418 807414
E: jvmalone1@bigpond.com

W.J. McCallum

Booleroo Centre 5482 SA
P: 08 8666 6062

R.H.W. & S.D. Sampson

Strathalbyn 5255 SA
P: 08 8536 6021

J Stockham

Woodside 5244 SA
P: 0475 593 663

Peter Wilson

Brentwood 5575 SA
P: 0408 534 071
E: pcklwilson@hotmail.com

R.M. Wilson & Son Life Member

Via Minlaton 5575 SA
P: 0428 434 534
E: wilsonbeef@hotmail.com

VIC Membership Directory

GM & KJ Abbott

Kolora 3265 VIC
P: 0438 922 313
E: gk.abbott@bigpond.com

Donald R Castle

Stoneyford 3260 VIC
P: 0417 169 914

Ross Draper Life Member

Arthurs Creek 3099 VIC
P: 0428 510 252
E: redcactus@bigpond.com

B E & L E Johnson

Kinglake Central 3757 VIC
P: 03 5786 1431
E: be.johnson@bigpond.com

Richard J Kelleher

Navarre 3384 VIC
P: 03 5357 4100

Carlie Mackelmann

Invergordon 3636 VIC
P: 0447 772 142
E: carlie.mackelmann@gmail.com

Pamela Mawdsley

Dumbalk 3956 VIC
P: 0413 455456
E: info@Finmawfarm.com.au

F J & M D McCormack

Mansfield 3724 VIC
P: 0409 951 903

F & A K Moya

Nar Nar Goon 3812 VIC
P: 03 5942 5473
E: a.k.moya@bigpond.net.au

A. & J. Munro

Costerfield 3523 VIC
P: 0439 782 198

D.N. Payne

Kilmore, 3764 VIC
P: 0418 587 655
E: dnpayne@bigpond.net.au

Judy Rand

Cannons Creek 3977 VIC
P: 0419 337 760
E: judyrand@ozemail.com.au

TW Robbins

Plenty 3090 VIC
P: 0419 380 301
E: tony.robbins@jackhouse.biz

I A & N F Staff

Pheasant Creek 3757 VIC
P: 0411 314 501
E: ianstaff@techinfo.com.au

S. Storm & Sons

Barham 2732 NSW
P: 03 5453 2140
E: trentstormley@yahoo.com

Sue Wainwright

Emerald 3782 VIC
E: kymmitsu@gmail.com

Gay Ward

Arthurs Creek 3099 VIC
P: 0417 558 508
E: honerv@gmail.com

WA Membership Directory

E & J Ghilarducci

Karragullen 6111 WA
P: 0418 913 381
E: paulghil@yahoo.com.au

Q & S Hooper

Wembley 6913 WA
P: 0419 041 220
E: redsandsredpoll@yahoo.com.au

Luke & Alex Longford

Quairading 6383 WA
P: 0428 940 379
E: alex_longford96@hotmail.com

Oliver Mcleary

Corrigin 6315 WA
P: 0497 193 447
E: oamcleary@gmail.com

J H Williams & Co Life Member

Quairading 6383 WA
P: 08 9645 5220
E: yongerellen@activ8.net.au



Sydney Royal Junior
Champion Heifer -
Red Cactus Joclyn

REDcactus

BREEDING QUALITY CATTLE



Sydney Royal Grand
Champion Female -
Red Cactus Teah.

ROSS DRAPER 0428 510 252

Email redcactus@bigpond.com www.redcactusredpoll.com